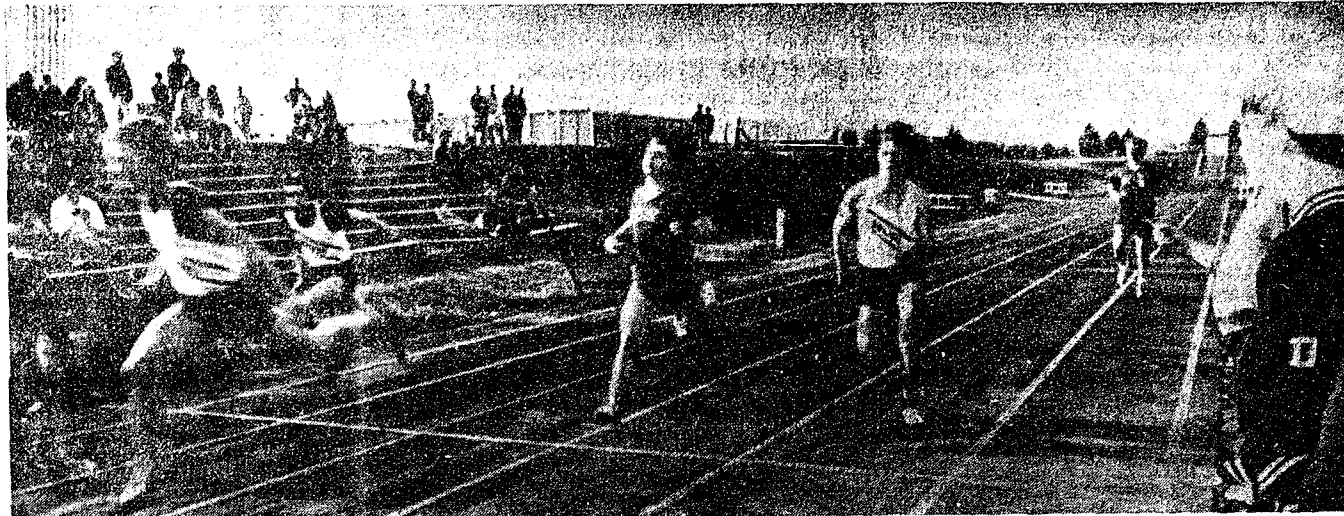


WAIT UNTIL NEXT MEETING: Saline is leading the league thus far in this year's young track season. Since defeating last season's champion Bulldogs in a dual meet last Thursday, they are

considered practically unbeatable throughout the balance of the schedule. They have great depth in such events as the 440-yd. run which enabled them to rout the Chelsea squad.



BEING CLOSE DOESN'T COUNT: In a dismal showing, the Chelsea High school track team suffered a humiliating defeat, 89-34, at the hands of visiting arch-rival Saline, Thursday, April

13. Saline "just plain beat" the Bulldogs with efforts like their sweep of the 100-yd. dash.

WEATHER

	Min.	Max.	Precip.
Wednesday, April 12	37	55	0.08
Thursday, April 13	42	62	Trace
Friday, April 14	35	45	0.01
Saturday, April 15	43	57	0.77
Sunday, April 16	40	48	1.16
Monday, April 17	32	38	0.20
Tuesday, April 18	43	74	0.00

By H. K. L.

The Chelsea Standard

QUOTE

"Courage is a quality so necessary for maintaining virtue that it is always respected, even when it is associated with vice."
—Samuel Johnson.

ONE HUNDRED-SECOND YEAR—No. 44

12 Pages This Week

CHELSEA, MICHIGAN, THURSDAY, APRIL 20, 1972

15c per copy

SUBSCRIPTION: \$4.00 PER YEAR

Tag Day Set To Help with Scholarships

National Honor Society Sponsored Project Seeks 'Dollars for Scholars'

The Chelsea High school chapter of the National Honor Society is sponsoring a Tag Day again this year in an effort to assist the Scholarship Fund committee in raising funds to further the education of deserving seniors.

Termed "Dollars for Scholars," the project will send dedicated teams of National Honor Society members to the streets Friday and Saturday, April 21 and 22 in an all-out effort to sell the tags. Students will be located at strategic corners throughout the village. In addition to contributing to this worthy cause contributors are asked to note each student's name on their tag as this affords an excellent opportunity for residents to meet the honor students from the high school.

Originally established by the Chelsea Teacher's Club in 1966, the Chelsea Scholarship Fund is dedicated to the purpose of assisting graduates seeking education and training beyond the high school level. The scholarships are by no means restricted to students planning on going on to college

but are also awarded to those seniors who seek training in skilled trades and other professions.

With the ever-increasing cost of obtaining a college education or practical training, it becomes more important than ever that this year's Tag Day be a huge success. The committee hopes that no deserving high school senior will be forced to forego further education because of financial shortcomings.

(Continued on page six)

Lynn C. Faist Graduating at Western Michigan

Another dedicated teacher will embark on her career as Lynn Christine Faist graduates Saturday, April 22 from Western Michigan University. Lynn is the daughter of Mr. and Mrs. T. E. Faist, 139 Clarendale Ct.

Miss Faist will receive her degree from the Communications

(Continued on page two)

Track Team Blasted, 89-34, By Saline

A decimated Chelsea contingent suffered a humiliating defeat Thursday, April 13, at the hands of arch-rival and powerhouse Saline in a dual track meet.

Referring to the 89-34 white-wash, coach Bert Kruse stated simply, "they were ready and we were not. We didn't run up to expectations... and also, they just plain beat us."

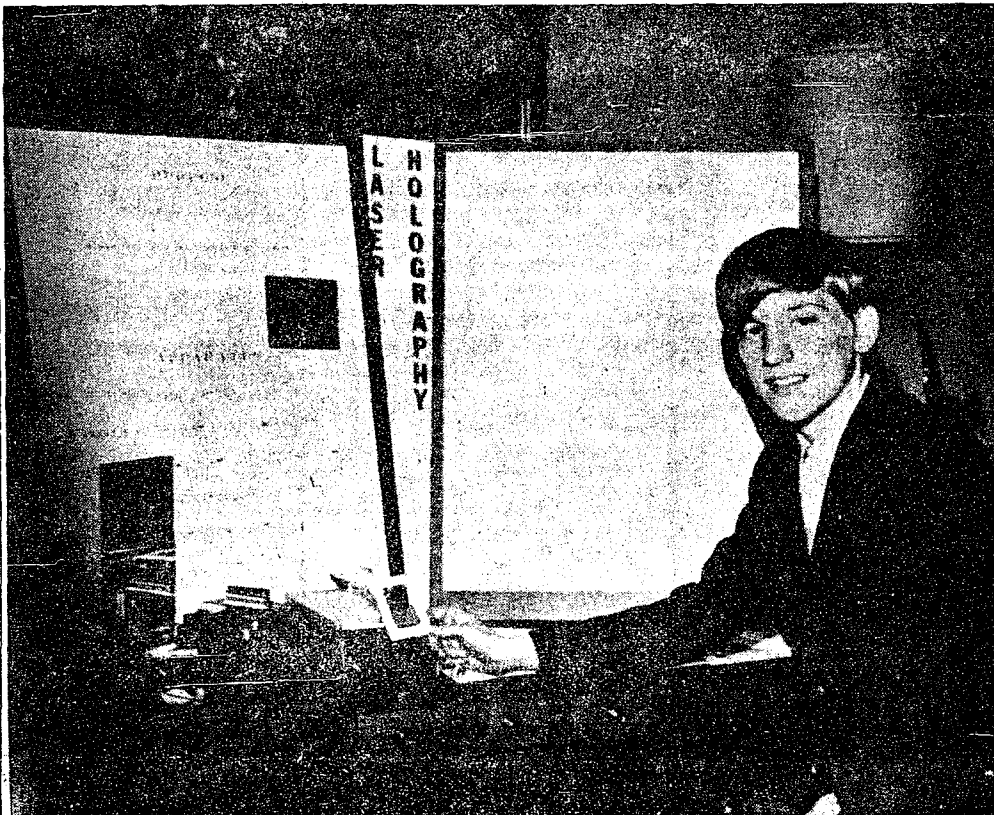
The coach made no excuses but pointed out that the Chelsea squad has lost 8 returning lettermen this season from injury, ineligibility, or various other reasons, which could account, in part, for the lopsided victory.

There were a few bright spots during the disappointing day. Randy Seitz won the shot put with a heave of 46'10" and Dave Buxton lead the field in the mile with a 4:43.8 effort. Chelsea took first and second place honors in the pole vault as Tim Lancaster and Don Pierson soared 11' and 10' respectively.

The season, however, is not completely lost. Barring another team upsetting league leading Saline, Chelsea will get another shot at the front-runners in the final conference meet. In league scoring, dual meets and the final conference meet each count half to determine the championship. With a victory over Saline in the finals, Chelsea would reign as co-champion, providing they go into the finals with only the one loss.

Chelsea will travel to Lincoln Thursday, April 20 in hopes of getting

(Continued on page six)



SCIENCE FAIR WINNER: David P. Klemmer, a Chelsea High school sophomore, was the second place winner in the Senior Division of the 14th annual Southeastern Michigan Science Fair held in Ann Arbor, Saturday, April 15. David's project

entitled "Laser Holography" involves the use of laser photography to obtain three-dimensional images of objects. He will now go on to compete in the International Science Fair to be held April 30-May 5 in New Orleans, La.

David Klemmer Places 2nd in Science Fair

High School Sophomore Wins with Intricate Laser Holography Display

David P. Klemmer, a Chelsea High school sophomore, placed second in the Senior Division of the 14th annual Southeastern Michigan Science Fair held in Ann Arbor Saturday, April 15. As the second place finisher, David received \$100.

an all expense-paid trip to the International Science Fair to be held April 30 to May 5 in New Orleans, La., and a silver medal.

His complicated project entitled "Laser Holography" involves the taking of three-dimensional pictures by means of a laser beam. The film must then be developed in a 30-minute process and viewed through a special mono-chromatic light which enables the viewer to see a perfect three-dimensional image. Aside from the entertainment value of 3-D movies and television, it is a potentially valuable means of finding stress defects in equipment parts and other manufactured items.

David became interested in lasers when he studied them in his 8th grade science class in Elizabethtown, Pa. David and his family moved to 634 Flanders, from the small town outside of Philadelphia just nine months ago.

He began his project last summer and worked on it in his spare time throughout the past school year. His sponsor for this competition was his biology teacher at the high school, Mrs. Scott.

Though it involved a great deal of work, David is definitely planning on entering another project in next year's fair. As yet he has no topic, though this young physicist should have no trouble devising an equally amazing exhibit.

David will now pack up his laser and enter the International Fair where he describes the competition as "very tough." His long range plans include college, hopefully the University of Michigan or Michigan State University, majoring in one of the sciences, and then possibly medical school.

Atomic Energy Lecture Slated At High School

A demonstration lecture sponsored by the U.S. Atomic Energy Commission on atomic energy and its applications will be presented at Chelsea High school, Monday, April 24.

The program, titled "This Atomic World," is designed to acquaint students with the basic principles of nuclear energy, its sources, and role in agriculture, industry, medicine, and research.

John Ross will present the assembly program, which explains in easily understood terms the structure of atoms and the operation of nuclear reactors as well as such concepts as radiation, fission, and fusion. Ross has completed extensive training at the Oak Ridge, Tenn., facilities of the Atomic Energy Commission. He is a graduate of Michigan State University, and holds a bachelor of science degree.

Specially designed electronic equipment is used during the 40-minute program to demonstrate the sources of radiation, how nuclear energy is harnessed to furnish electric power for cities, and the use of radioisotopes to aid in the diagnosis and treatment of diseases and to learn more about life processes.

A blackboard talk to science classes, which deals more specifically with such topics as atomic structure, radioactivity, radiation

(Continued on page two)

Track Team Rebounds To Crush Milan

Rebounding from their crushing defeat at the hands of Saline last Friday, April 14, to post a lopsided 9-0 victory over Saline, Tuesday, April 18.

Jumping off to an early lead in the field events, the Bulldogs never trailed, leaving only the final point spread in question.

Senior Randy Seitz, a consistent standout in the shot put for the high school, again took a first with a toss of 48' 9/16" with Ishmael Picklesimer finishing third. Roger Fitch and Bill Tite finished first and second in the high jump with leaps of 5'10" and 5'8", respectively. Graig Coltre took a second in the long jump with an 18'8" effort.

Chelsea swept the pole vault with junior Tim Lancaster setting the pace with a vault of 11'6". Dan Hoover and Don Pierson rounded out the sweep.

Craig Coltre, only a sophomore, placed first in the 180-yd. low hurdles with a time of :22.9 and second in the 120-yd. highs in :18.3. Tim Lancaster trailed his teammate in the low hurdles and finished second.

In the 220, junior Lee Ferguson took second with a time of :25.1 with Carl Gauss placing third.

Dan Hoover and Ferguson ran 1-2 in the 440 with Hoover posting a time of :55.2.

Jeff Marshall took a first in the 880-yd. run in 2:41.8 with Jeff Van Riper third while Chelsea's best mile, senior Dave Buxton again took his event with a time of 5:01.2. Jim McGinn followed Buxton across the line.

Howard Schenk won the grueling two-mile event with a time of 11:58.4. Keith Kargel finished third in the event.

The Chelsea mile relay team of Hoover, Van Riper, Marshall, and Buxton won in a time of 3:45.8. There has been a change in scheduling for the upcoming week with the home meet against Brighton changed to Monday afternoon and the meet with Novi moved up to Wednesday.

Attending Convention

Harold Salyer and Ott Risner will be in Atlantic City, N.J. next week to attend a UAW convention as representatives of Local 437.

Baseball Team Keeps on Winining

The Chelsea High school baseball team blasted four home runs Friday, April 14, to post a lopsided 9-0 victory over Saline.

The power of the Bulldogs' bats, combined with a one-hit pitching effort by seniors Ron Sweeney and Wayne Welton, proved more than Saline could handle.

Chelsea wasted no time as the starting pitcher, Sweeney, quickly put the squad in front to stay with a two-run homer in the first inning. Sweeney was 2 for 2 at the plate before being lifted in the 5th inning.

Another two-run homer was smacked in the second inning by Steve Flint, a senior.

With the game well in hand, Todd Sprague, a senior, ripped a three-run home run in the 5th, followed by a solo marker by sophomore Mike Nadeau.

Ron Sweeney pitched one-hit baseball until he was relieved at the start of the 5th by Wayne Welton.

Welton did not allow a hit for the last three innings and, under high school rules, received the win for the game. In high school athletics the starting pitcher must work five innings in order to receive the win. Last week Welton threw a one-hitter against Dexter to lead the team to a 10-0 victory.

(Continued on page three)

Friends of Library Start New Year With Monday Meet

"Friends of the Library" society is holding its first meeting of the year Monday, April 24 at 8 p.m. in the library. Guest speaker for the evening will be Professor Merle Crawford of the University of Michigan's School of Business Administration with the topic: "The End of Poverty, Pans, and Pregnancy."

Professor Crawford has been on the faculty of the University of Michigan since 1965, his teaching interest centering principally in overall marketing strategy, management of distribution channels, new product development, and the social responsibilities of marketing.

He has published a book entitled "The Future Environment for

(Continued on page two)

Chelsea baseballers showed their poise by pulling a come-from-behind 4-2 victory over Lincoln, Tuesday.

Lincoln collected both of their runs in the first inning on three hits and an error. Chelsea pitcher Tim Van Slambrouck then held on, allowing only three more hits for the remainder of the eight inning game. After his shaky first inning, he seemed to settle down and didn't allow any walks while recording nine strikeouts.

The Bulldogs waited until the 7th inning to get uncorked but then a hit batsman and an error by Lincoln gave them the opportunity to tie the game in the final inning of regular play. Jeff Daniels doubled to drive in one run, and the pitcher, Van Slambrouck, singled to bring Daniels across.

In the first extra inning Wayne Welton, who plays 3rd base when he isn't pitching, doubled and another versatile Chelsea pitcher, Ron Sweeney, walked. Ralph Stewart forced an error by the 2nd baseman and Welton scored from 2nd. To compound the error, when the 2nd baseman threw to first in an attempt to make the put-out on Stewart, the 1st baseman made a wild throw to the plate and Sweeney scored.

The two fluke runs in the 8th proved to be enough as Lincoln went down without scoring in the half of the inning.

The next challenge for the Bulldogs will be Thursday, April 20 against East Jackson at home followed by an away game Friday, April 21 with Novi.

Lesley Leggett Home From Army Service

Lesley Leggett, a 1969 graduate of Chelsea High school, returned home in March after 13 months army service in Europe. Drafted and sent to Baumholder, Germany after his basic training at Ft. Knox he received his release 166 days early because of President Nixon's current policy of cutting back on garrison troop numbers in Europe. Currently living at 16920 Waterloo Rd., Leggett is employed by North American Rockwell.

Barn Dance Will Benefit Blind Students

An after school charity organization, "We Care," is sponsoring a real country and western barn dance Saturday, April 22 from 7 to 11 p.m. in the high school gymnasium. All proceeds from the evening will go to the Michigan school for the blind in Lansing.

The students hope to raise enough money to buy two microwave ovens for the home economics classes at the Lansing school. Committee chairman, Gilda Gillespie said that the group decided on the ovens when her mother heard Arthur Godfrey say on the radio how wonderful they would be for blind people because they do not heat up and cause burns as do conventional ovens.

The group recently visited the school for the blind and were impressed by how self-reliant these young people are. Far from being helpless, they found them "just like us" and decided to help them in whatever way they could. A contingent from the school for the blind reciprocated the visit and put on a musical show at the high school with two rock bands.

"We Care" has been in existence since December, holding its weekly planning meetings at members' houses during the evening. They intend to stay organized for the purpose of planning future charity projects.

Miss Gillespie anticipated a large turnout for the dance for several reasons.

"The students realize this is a charity affair," she said, "and I think they will all turn out because it is for a good cause. Also because two of the bands playing are (comprised of) Chelsea High school students."

The two bands from the school for the blind are basically rock oriented which should insure a sizable crowd.

A previous concert sponsored during school hours by the student council netted \$67 which was donated to the "We Care" fund.

"They seemed to like that concert," Miss Gillespie said of the high school students, "so they should really like the dance."

Tickets will be available at the door or by calling 475-2292. The students also need an experienced square dance caller to donate his time for the evening.

Duane Bycraft Home After Basic Training

Duane Bycraft, a 1971 graduate of Chelsea High school, has just returned from a five month basic training period with the army. Stationed at Fort Knox, Ky., during his training, he will now serve for six years with the Michigan National Guard. Duane hopes to get a job in the area and will live with his parents at 12493 Scio Church Rd.



WALK FOR MANKIND: Howard Holmes, center, has been named honorary chairman of the Project Concern "Walk for Mankind." The "walk," sponsored by the Jaycees with Mike Eubanks, right,

as chairman, will be held May 6. Todd Gardner, left, is head of the Chelsea High school steering committee co-ordinating the walk.

Howard Holmes Will Serve As Walk Project Chairman

The Chelsea Project Concern "Walk for Mankind" committee has announced that Howard Holmes has agreed to serve as honorary chairman for the scheduled May 6 "Walk."

Holmes thus joins such notables as Leonard Woodcock, Charles Schultz, Gig Young, Bob Richards, Bob Considine, W. Clement Stone, Henry Cabot Lodge, United States Senators Edward M. Kennedy and Mark Hatfield, and Representatives John McConnaughey and Carl Perkins in actively supporting Project Concern's non-profit medical relief programs. Since its conception in 1961, the organization has helped countless numbers in Appalachia, New Mexico, Texas, Mexico, Hong Kong and Vietnam.

Holmes is a native of Chelsea, now residing in Ann Arbor. He holds a BS degree in mechanical engineering from the University of Michigan and previously attended Princeton University. He is the president and director of the Chelsea Milling Co., vice-president and director of the Chelsea State Bank, director of the Ann Arbor Trust Co., chairman of the board and director of the Miller's National Federation, and vice-chairman and member of the Advisory Board of St. Joseph Mercy Hospital in Ann Arbor. He is also a trustee of the Portage Council Boy Scouts of America and co-chairman of the Advance Memorial Gifts Division of St. Joseph Mercy Hospital's building fund campaign.

The "Walk," which has an estimated 300 participants including students, adults, parents, and pets, will trace a 20-mile route designed to begin and end in Chelsea.

The idea of walking to raise money originated in England where walks for charities have been held successfully for years. Project Concern's first "Walk for Mankind" took place on Sept. 6, 1969 in Santa Rosa, Calif.

In 1970-71 Project Concern held more than 200 different "walks" in the United States and abroad. These pioneer "walks" raised more than \$1,500,000 for the project's ongoing medical, dental, and educational programs.

Briefly a "walk" works like

(Continued on page three)



IT WASN'T OUR DAY: The Chelsea track team's repeat title hopes were diminished Thursday, April 13, when Saline came to town ready and able to unseat last year's champs. Saline was

far superior in almost every event, including this victory in the 180-yd. low hurdles.

Want to sell a car? Use a Standard Want Ad!

SPECIALS

COUPON

REGULAR PRICE 74¢

HOLSUM BREAD

2 for 49¢

WITH COUPON

THIS COUPON OFFER EXPIRES APRIL 23, 1972.

COUPON

REGULAR PRICE \$1.29

ECKRICH LUNCH MEAT

SMORGAS-PAC

79¢

WITH COUPON

THIS COUPON OFFER EXPIRES APRIL 23, 1972.

GALLUP - SILKWORTH

PUMP & PANTRY

295 S. MAIN

CHELSEA MICH.

Walk for Mankind...

(Continued from page one)

this: a group such as the Kiwanis Club, Junior Woman's Club, or Jaycees, along with a steering committee from the local high school, meet and agree to sponsor a "walk" in the community. They register with Project Concern's International Headquarters in San Diego and begin to contact local church, civic, and school groups. Walkers of all ages register with the local "walk" committee and sign-up as many sponsors as possible. Sponsors may include relatives, friends, neighbors, or anyone who agrees to pay Project Concern an amount of money for every mile their entrant walks. These pledges can range from a nickel to \$100 or more per mile.

(Any groups, clubs, or businesses interested in this worthwhile organization should contact Mike Eubanks at 475-2882 or Tom Stettin at 475-8704.

Baseball Team...

(Continued from page one)

When asked why Sweeney was lifted when he was obviously in no trouble, Coach Genske said, "He hadn't pitched in a week and he was getting a little stiff. Ron also has been having trouble with his back and it was awfully cold out there. Plus Wayne needed the work."

The pitching duo combined to strike out 13 batters.

Subscribe Today to The Standard!

Letters to the Editor

To the Editor:
Attention: Taxpayers, Chelsea School District.

Everyone is aware of the high food cost. I am sure. The food prices are slowly coming down and markets are asked to hold down prices on meats and dairy products. Everyone is doing their best to get things back to normal.

Not so our school board! We'll sell the old Junior High property and while we're at it let's ask the taxpayers for more. Not to improve the curriculum but for more bleachers, outside lighting and paved parking so our out-of-town visitors who come to see our sport events and chorus shows will say "my what a fine school they have."

During the parent-teacher conference held a few weeks ago several teachers told me my child needs extra help with reading. But I was told not to worry because there are so many students, even in 7th and 8th grade who are reading at 4th grade level. I asked what I can do and was told nothing. It was up to the school to get a reading teacher on a full-time basis. And he needs more professional help then I can give him.

It seems the teachers have suggested this and approached Mr. Conklin about it but they say there is no money to get this help so many of the students need.

I hope you parents will remember this when you go to the polls in May. Vote no to frills and special features until every child has the help he needs to graduate.

A registered voter.

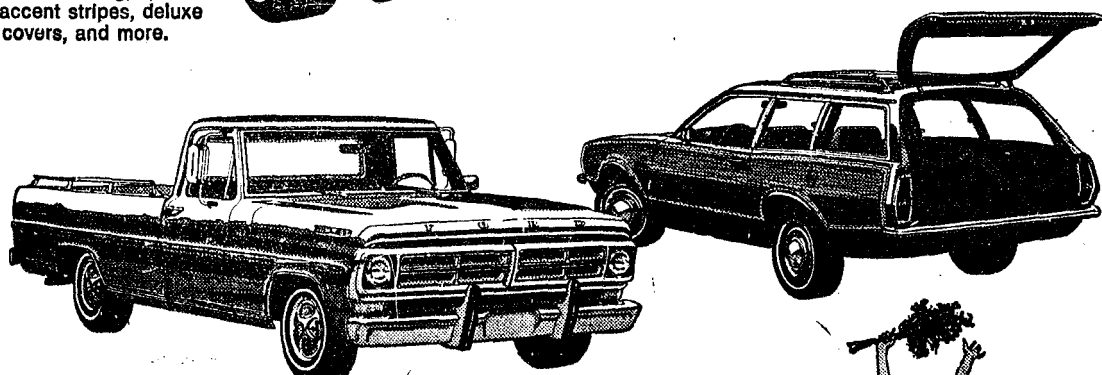
Your Ford Dealer has more new models, special models and sale models than anybody.

RED, WHITE AND BLUE SPRINTS.
Sporty Pinto, Maverick and Mustang
springs with accent stripes, dual racing
mirrors, USA emblem, whitewalls, more.



SPECIALLY EQUIPPED
FORD GALAXIE 500's.
Special values with options
like air conditioning, special
paint, accent stripes, deluxe
wheel covers, and more.

NEW FORD PINTO WAGON.
Pinto Wagon—for more room
than an economy car, but
still economy-priced.



FORD EXPLORER SPECIAL PICKUPS.
Special package discounts on special
option packages including air conditioning,
automatic transmission, tinted
glass, more.

FOR-FUN PINTO SUNROOF.
Lets the sunshine into Pinto
Sedan and Runabout models.



Spend 15 minutes

with the Ford Team

PALMER MOTOR SALES, INC.

CHELSEA, MICHIGAN

Jiffy
BIG ENOUGH TO SERVE YOU... SMALL ENOUGH TO FIT YOUR CAR
Corner of SIBLEY & WERKHER RDS....CHELSEA, MICHIGAN

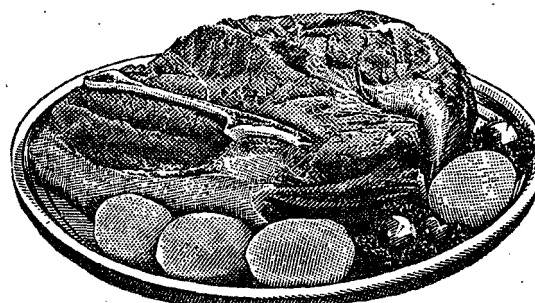
7 AM - 10 PM
OPEN 7 DAYS A WEEK
PHONE 475-5701

COMPLETE SUPER MARKET

SALE PRICES EFFECTIVE THURSDAY, APRIL 20, THRU SUNDAY, APRIL 23, 1972.

Store Hours Are 7 a.m. to 10 p.m. 7 Days A Week.

MEAT DEPARTMENT SPECIALS



U.S.D.A. CHOICE BEEF

CHUCK ROASTS

Blade Cut

69¢ lb.

7-Bone Cut **79¢ lb.**

Arm Cut **99¢ lb.**

English Cut **99¢ lb.**

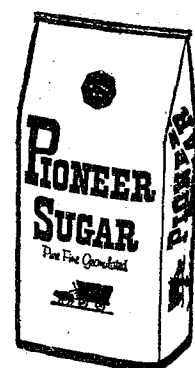
SLICED BOLOGNA
99¢ lb.

SLICED BACON
69¢ lb.

RING BOLOGNA
69¢ lb.

AGAR OR FARMER BOY
CANNED HAM
\$2.98
3-Lb. Can
Ideal for quick lunch or sandwiches.
SLICED FREE.

YOUNG - LEAN - TENDER
PORK LOINS
69¢ lb.
Sliced - Wrapped - Frozen
No Extra Charge.



SUGAR

5-Lb. Bag

49¢

Two Popular Favorites at Popular Prices
That Families Can Afford!

Kleen-Maid BREAD
1 1/4-Lb. Loaf **19¢**

Risdon's Homogenized MILK
Gallon **89¢**

1/2 GALLON
EASY MONDAY DETERGENT ... **39¢**
1-LB., 2-OZ. JAR
JIF PEANUT BUTTER ... **59¢**
Absopure Distilled Water, 5-qt. ... **39¢**
15-OZ. JAR
CAMELOTE APPLE SAUCE ... **15¢**
1-LB., 1-OZ. CRTN.
HANOVER THREE BEAN SALAD ... **39¢**
1-PT., 12-OZ. BOTTLE
VERNOR'S GINGER ALE ... **25¢**
100-COUNT PKG.
DIXIE RIDDLE DRINK CUPS ... **59¢**
50-COUNT BOX
BOOK MATCHES ... **10¢**



Glacier Club ICE CREAM
Half Gallon **49¢**
for only

20-LB. BAG
CHARCOAL BRIQUETS ... **\$1.29**
25-LB. BAG
JESTER DOG FOOD ... **\$1.99**



MIRACLE WHIP
1-Qt. Jar
49¢

FRESH PRODUCE DEPT.
CALIFORNIA HEAD LETTUCE ... **29¢**
FRESH, CRISP
RED RADISHES ... **2 pkgs. 29¢**
U. S. NO. 1
MAINE POTATOES ... **10-Lb. Bag 59¢**
U. S. NO. 1
DELICIOUS APPLES ... **3-Lb. Bag 59¢**

JIFFY MARKET

MARATHON

JIFFY MARKET

DISCOUNT GAS PUMPS

Finest Top Quality Gas at Low Discount Prices!



We appreciate your business!

MARATHON
REGULAR GAS **33.9** gal.
Includes All Taxes
MARATHON
PREMIUM GAS **37.9** gal.
Includes All Taxes

KLEER - VIEW WINDSHIELD WASHER SOLVENT
59¢ gal.

GAS PUMPS & STORE OPEN 7 a.m. to 10 p.m. 7 Days a Week

Ads Taken Till 5 p.m. Tuesday

IT'S EASY TO BUY-SELL-RENT-HIRE & FIND WITH WANT ADS

Just Call
GR 5-3581

WANT ADS

The Chelsea Standard
WANT AD RATES

PAID IN ADVANCE—All regular advertisements, 50 cents for 25 words or less, each insertion. Count each figure as a word. For more than 25 words add 2 cents per word for each insertion. "Blind" ads or box number ads, 35c extra per insertion.

CHARGE RATES—Same as cash in advance, with 15 cents bookkeeping charge if not paid before 5 p.m. Tuesday preceding publication. Pay in advance, send cash or stamps and save 15 cents.

DISPLAY WANT ADS—Rate, \$1.10 per column inch, single column width only. Spots and 14-point light type only. No borders or boldface type. Minimum 1 inch.

CARDS OF THANKS OR MEMORIALS—Single paragraph style, \$1.00 per insertion for 50 words or less; 2 cents per word beyond 50 words. COPY DEADLINE—5 p.m. Tuesday week of publication.

KNAPP SHOES
For Cushion Comfort
Robert Robbins
475-7282 48ft

FORMAL WEAR
RENTAL SERVICE
Proms - Weddings - Special Events
6 different colors.

Foster's Men's Wear
43ft

REAL ESTATE
4-ROOM Cedar Lake cottage. Excellent waterfront lot, \$16,000. Good terms.

R. D. MILLER REAL ESTATE
Real Estate Broker
475-7311
15775 Cavanaugh Lake Rd. Chelsea, Mich. 37ft

Seamless Aluminum Gutters
White, brown, black or green.
WILSON METAL SHOP
428-8468, Manchester x24

Gem Travel Trailers and Campers
PICK UP COVERS
4" ————— \$100.00
26" ————— \$179.00 and up

Triangle Sales
Chelsea 475-4402 40ft

FOR SALE—1966 Ford pick-up, 1/2 ton. Ph. 475-8596. x44

TYPISTS and Stenos
For TEMPORARY ASSIGNMENTS
JERRY RUSHING
Temporary Help Service
3800 Packard, Ann Arbor
Phone 971-1631 x44



Friend in Need

We serve your best interests with our best efforts.

Staffan Funeral Home

"Funeral Directors for Four Generations"

124 PARK STREET PHONE GR 5-4417

WANT ADS

Special of the Week

1970 Electra 225 Custom 2-dr. Vinyl top, air conditioned, 23,000 miles, showroom new. Reduced \$3995

USED CARS

- 1971 Ford Custom 1/2 ton pick-up, like new, 15,000 miles. \$2495
- 1970 Ford LTD Country Squire 10-passenger (air cond.). \$2795
- 1969 Olds 98 4-dr. sedan, clean (air cond.). \$2295
- 1970 LeSabre 2-dr. Custom. Vinyl top, showroom new. \$2295
- 1969 Olds 98 4-dr. hardtop. Full power, vinyl top. \$1995
- 1969 Buick LeSabre 2-dr. hardtop. Vinyl top. \$1995
- 1968 Cadillac Fleetwood Brougham Loaded, clean. \$2895
- 1969 Cutlass Supreme 4-dr. (air cond.). Clean. \$1995
- 1968 Olds Delmont 2-dr. 26,000 miles, one owner. \$1495
- 1968 Electra 225 Custom 2-dr. Clean (air cond.). \$1995
- 1968 Buick LeSabre Custom 4-dr. hardtop. Vinyl top. \$1395
- 1968 Chev Impala 2-dr. hardtop. Air cond. \$1495
- 1967 Olds Vista Cruiser Custom (air cond.). Clean. \$1495
- 1967 Electra 225 4-dr. sedan. Air cond., vinyl top. \$1295
- 1967 Buick LeSabre 4-dr. sedan. \$1095
- 1968 Skylark Custom 2-dr. hardtop, vinyl top, clean. \$1095
- 1966 Buick Special 4-dr. sedan. \$595
- 1962 Volkswagen. Sun roof. \$395

SPRAGUE
Buick-Olds-Opel, Inc.
1500 S. Main St., Chelsea
Phone 475-8664 44ft

Voted the Car of the Year CHEVROLET NOVA

NOVA COUPE
250 cu. in. 6-cyl. engine
Automatic transmission
Power steering
A-M push button radio
Placer Gold color
\$2490

FRANK GROHS CHEVROLET
See Fred Dupuis x44

FOR SALE—1954 Chevy step van. Sleeps six. Good condition. 38,000 miles, no rust. Ph. 475-7073. x45

CLOGGED SEWER

Reynolds Sewer Service

We Clean Sewers Without Digging
Drains Cleaned Electrically
FREE ESTIMATES
2-YEAR GUARANTEE
Phone Ann Arbor NO 2-5277
"Sewer Cleaning Is Our Business—Not a Side-Line"
CAR & TRUCK LEASING. For details see Lyle Chriswell at Palmer Motor Sales, GR 5-3271. 49ft

WANT ADS

ROBERT PATRICK for home improvement, building and maintenance. Ph. 475-7460. 45ft

HAMMOND ORGAN teachers wanted to teach in their own homes. Call Grinnell Brothers, Ann Arbor, 662-5687. 34ft

CALL FRANK for all your carpet cleaning jobs, morning or weekend. Needs only 3 hours to dry. Only 10¢ per square foot. Phone now for free estimate, 761-4328. All work guaranteed. 53ft

PIANO TUNING, Chelsea and area. Facilities for reconditioning and rebuilding. Used piano sales, reconditioned grands and verticals. E. Eklund. 426-4429. x50ft

Contractor Servicing Chelsea, Dexter and Manchester Areas

Complete Home Remodeling
Inside and Outside
Specializing in extra living space, recreation rooms, kitchens and paneling. Installing all aluminum products, 5" eavestroughs, custom-made awnings, windows and doors, aluminum siding in many selected colors and styles.

Please Call
DALE COOK
Chelsea 475-8863 20ft

NOW Full Time Complete Body Shop Service
Stop in For An Estimate
PALMER FORD
222 S. Main St.
475-3271 27ft

FOR REAL DOLLAR SAVINGS be sure and see us before you buy any new or used car. Palmer Motor Sales, Inc. Your Ford Dealer for over 50 years. 2ft

G. G. HOPPER
Building Contractors
Phone GR 5-5581
Gregory 498-2148 40ft

PROM TIME is here
Formal Wear at its finest. 25 different models. 10 colors in shirts. Orders should be placed 2 weeks in advance.
Strieter's Men's Wear 44

Professional Siding Application Service

Specializing in Solid VINYL Siding and solid VINYL Trim
We have all the special equipment necessary for the job professional fabrication and application of the perfect SIDING and TRIM—SOLID VINYL. Rigid VINYL is as efficient as wood, 238 times more efficient than steel, 1,080 times more efficient than aluminum.

Call or Write
D. Edwards & Sons
5450 Conway Rd., Chelsea
Phone 475-2014
FREE ESTIMATES 52

Lawn & Garden Supplies For Your Spring Needs

- BULK AND PACKET SEEDS**
ONION SETS
LAWN & GARDEN FERTILIZERS
BULBS
—GLADS
—DAHLIA
—BLEEDING HEART
—TUBEROUS BEGONIA
MILORGANITE
PEAT MOSS
BONE MEAL
ROSE FOOD
ORTHO PRODUCTS
PARKER LAWN SWEEPERS
Chelsea Hardware 44



"Now, once more, tell me how a parked truck slammed into this car you got in the Standard Want Ads!"

WANT ADS
PATCHING and PLASTERING.
Call 475-7489. 38ft

A fine selection of
New and Used Cars
for immediate delivery

Harper Pontiac Sales & Service
475-5311
Evenings, 761-2999 1ft

CLARENCE WOOD REAL ESTATE

NEW LISTING—Two-story brick colonial, 4 bedrooms, 3 baths, family room with fireplace. Paneled and carpeted rec room. Spotless. \$48,500.
CAVANAUGH LAKE—Lake-front cottage, 12x24 living room, 2 bedrooms, kitchen, full bath and screened porch. Partly remodeled, needs finishing. \$14,500.
OVERLOOKING INVERNESS Golf Course—3-bedroom brick ranch. 2 fireplaces, 2 ceramic baths, attached garage, full basement. Brand new, \$48,500. Make an offer.
BUILDING LOT—60 ft. x 132 ft. Village water and sewer. Located on Dewey St.

CLARENCE WOOD BROKER
Efficient PERSONAL Service
646 Flanders St., Chelsea
Phone 475-2033 43ft

Real Estate For Sale
4-BEDROOM HOME with 2 baths, living room, dining space, modern kitchen, full basement.
55 ACRES vacant land east of Chelsea.
See or Call

Kern Real Estate
616 S. Main, Chelsea
or phone 475-8563 -44ft

FOR SALE—AKC registered Miniature Schnauzer, female, 13 weeks old, all shots except rabies. Phone 475-2937 before 1 p.m. or after 6:30 p.m. weekdays, anytime week-ends. x45
GLADIOLI BULBS for sale. By the dozen or the hundred. Perry's Roadside Stand, 20624 Waterloo Rd. x45

SALESMEN
\$8400 plus for a year
Hospitalization
Retirement
Plus other benefits.

TRUST REALTY CO.
1207 Packard, Ann Arbor
769-7750 x47

FENCE BUILDING — Especially rubber fencing; dog pens, tree trimming, lawn work, odd jobs. Reliable. Call Ron, 971-3594. x45

3-YEAR-OLD Appaloosa mare with papers Green broke, gentle. \$250. Ph. 426-3649. x44

FOR SALE—1972 60cc Yamaha Mini-Enduro. Never ridden. Will sacrifice for cash sale. Phone 475-2937 before 1 p.m. or after 6:30 p.m. weekdays, anytime week-ends. x45

WANTED—Used animal electric clippers. Phone 475-7701. x44

Time for a Change...

... from old, worn down tires to **SAFE** new ones! Come in today!

Your tires have been taking a real beating... How much longer can they stand up? Better to be safe than sorry! Trade them in on a new set.

UNION 76 OIL PRODUCTS

Jim's Union 76 Service

Tires — Batteries — Tune-Ups — Brake Service — Wheel Alignment
PHONE 475-2822 501 SOUTH MAIN

WANT ADS

SPIKE'S FLEA MARKET
ANTIQUES and COLLECTIBLES
Every Saturday and Sunday
11 a.m. to 7 p.m.
Auctions
Every Saturday
at 7 p.m.
Dealers and public invited.
4065 Page Ave.
Michigan Center, Michigan
(Page Ave. Exit, east 7/10 mile)
Phone (517) 764-0250 x13ft

ADMIRAL
See the new Admiral color television. No color adjusting necessary.
SERVICE ON ALL MAKES TV - RADIO - STEREO
Antenna Sales and Installation.
PORTER'S TV
212 Buchanan St., Chelsea
Ph. 475-8380 46

60th ANNIVERSARY SALE
1972 PINTO
ONLY
\$1912
Delivered, including Sales Tax
1972 MAVERICK
ONLY
\$1995
1972 TORINO
2-Dr. Hard Top
ONLY
\$2595
With automatic transmission, power steering, radio
1972 GALAXIE 500
2-Dr. Hard Top
ONLY
\$2595
With 351" V-8, automatic transmission, power steering, radio.

Hearthside Yarn Shop
5450 Conway Road
Yarns, needles, accessories
Free instructions in knitting and crocheting with follow-up assistance.
Orders taken for hand-made items.
Ph. 475-2014 38ft

1968 FORD F-250 Camper Special, custom cab, V-8 engine, auto trans., power brakes, west coast mirrors, auxiliary fuel tanks, \$1895. Devon Lincoln-Mercury, 2100 W. Stadium, Ann Arbor. Ph. 662-5555. 35ft

Low Low Down Payment
On New
GOLD KEY MORTGAGES
For information ask your Realtor or call 663-7555.

Ann Arbor Federal Savings

REPAIR SERVICE for household refrigerators, freezers and garbage disposers. Call Bill, 426-8314. x12ft

CAR RENTAL by the day, week-end, week or month. Full insurance coverage, low rates. Call Lyle Chriswell at Palmer Motor Sales GR 5-3271. 25ft

1967 PONTIAC Catalina 2-dr. V-8, auto., power steering, air cond., \$995. Devon Lincoln-Mercury, 2100 W. Stadium, Ann Arbor. 38ft

PALMER FORD
Since April 1912
Open Evenings Till 9:00
Chelsea 475-3271 x44ft

MILLWRIGHT
We have an immediate second shift opening in the above classification. Qualifications are a journeyman's card or proof of eight years experience in the trade. Only those qualified need apply.

North American Rockwell Corp.
Mechanical Spring Plant
Chelsea, Mich.
An equal opportunity employer 44

GET THE MOST out of your corn acres... plant dependable, high yielding Pioneer Brand Seed Corn. See or call your Pioneer man, Honeggers & Co., Inc., Chelsea. Phone 475-3611. x44

KEEP THESE DATES IN MIND
April 28-29 we will hold our 3rd annual Alley Sale of Power Lawn and Garden Equipment. We will demonstrate our new line of McCulloch chain saws.

Chelsea Hardware 44

ELECTROLUX VACUUM CLEANERS
SALES and SERVICE
JAMES COX
Ph. 428-2931 or 428-8221
Manchester

WANT ADS

CALL JOHN'S SHOP for wedding invitations or any type of social stationery. 475-7800 evenings and week-ends. -46

Fireplace Builder
Field stone mason, block and brick mason, tuck pointing.
FREE ESTIMATES
Call 475-8025 after 3 p.m.
Patrick Grammatico x40ft

Glass and Screen Repair
We replace metal and wood windows. Screens replaced in aluminum or wood frames.
Chelsea Hardware
Phone 475-1121 2

2-CYCO FUEL
For All 2-Cycle Engines
WHITE GAS
Available at
Gateway Sports Centre, Inc. 45ft

USED CARS

'71 PLYMOUTH Fury III 4-dr. hardtop, 383, auto., p.s., p.b., rear defogger, rear speaker, 9,000 miles. \$2595
'68 DODGE Coronet 4-dr. sedan, 6-cyl., 3-speed, radio. \$625
'68 VALIANT 2-dr., 6 cyl., automatic, radio, new shocks, battery and exhaust system \$995
'68 VW square back sedan, 4 speed, radio. \$1095
'67 CHRYSLER Town & Country 2-seat wagon, 383, auto., p.s., p.b., tinted glass. \$995
'68 DODGE CORONET 2-seat wagon, V-8, automatic, power steering, radio. \$1095
'65 CHEVROLET 4-dr. sedan, 6-cyl., 3-speed. Immediate \$495
'63 CHRYSLER 4-dr. V-8, auto., p.s., p.b., radio, good tires. \$350

TRUCKS
'72 DODGE D-200, 400 engine, auto. trans., air conditioning, power steering, power disc brakes, radio, sure grip axle, tinted glass, advent pkg., rust-proofed. \$3750
'70 DODGE 1/2 ton, V-8, automatic, p. steering, radio. \$1995
'63 DODGE 1/2 ton, 318, 3 speed. \$95

Village Motor Sales, Inc.
IMPERIAL - CHRYSLER
DODGE - PLYMOUTH
1185 Manchester Rd., Chelsea
Phone 475-8661
Hours: 8 a.m. to 6 p.m.
Mon. thru Fri. Until 9 Thursday.
9 a.m. to 2 p.m. Saturday x44

ST. BERNARD PUPPIES — AKC reg. of course. Like to belong to one? Monastery Woods Kennels, 426-4881. x47

FOR SALE — Jalousie windows, many sizes, and 16-gallon electric water heater (110-v) Ph. 475-7026. x44

FOR SALE—20 gauge, 3 inch magnum Browning automatic. Used one season. Also, Hermes Ambassador standard typewriter, dual ribbon, excellent condition. Phone 475-2937 before 1 p.m. or after 6:30 p.m. weekdays, anytime week-ends. x45 condition. Ph. 475-8530. x45

PALMER FORD
Open Evenings Till 9:00
Chelsea GR 5-3271 x44ft

CASH
for homes in 24 hours
Trust Realty Co.
769-7750 x21

FOR SALE—16-ft. Omaha truck rack with hydraulic hoist. Good p.m. weekdays, anytime week-ends. x45 condition. Ph. 475-8530. x45

—SPECIALS—

10-OZ. PKG. ECKRICH

Smok-y-Link Sausage... 69c

CHOICE

Rib Steaks . . . lb. \$1.19

CENTER CUT SMOKED

Pork Chops . . . lb. 89c

ALL BEEF

Hamburger, 3-lb. lots \$1.79

LARGE SIZE SARA LEE

Pecan Coffee Cakes . . 79c

McDONALD'S VANILLA

Ice Cream . . . 1/2 gal. 74c

SCHNEIDER'S

MEATS - GROCERIES

PHONE 475-7600 121 S. MAIN ST.

WANT ADS

FOR SALE—9' racing hydroplane with steering controls. Completely fiberglassed. Very durable. Must see to appreciate! \$80. Phone 663-8228. x38tf

MR. REAL ESTATE BROKER!

Would you like an inside track on the out-of-town and out-of-state markets? Could you use a growing weekly list of buyers? Does a complete and comprehensive advertising program appeal to you? If you want the edge over your competition—write today for information. Replies treated confidentially.

STROUT REALTY

P. O. Box 2757
Springfield, Mo. 65803

1970 CHEV CAMARO 2-dr. hard-top. Red with black vinyl roof. Low mileage. \$2295. Devon Lincoln-Mercury, 2100 W. Stadium, Ann Arbor. Ph. 662-5555. x38tf

1969 PONTIAC Catalina 4-dr. hard-top. V-8, auto., power steering, power brakes, low mileage. One owner. \$1995. Devon Lincoln-Mercury, 2100 W. Stadium, Ann Arbor. Ph. 662-5555. x38tf

PLANT 16 ACRES of corn and keep crop. Ph. 475-5548. x44

WANT ADS

AUTO PARTS—3.91 Plymouth rear-end, complete with new brakes and drums, fits compacts only, \$80. Also 3.23 ring and pinion and driveshaft with universal for Plymouth's small rear axle. Reasonable. Phone 663-8228. x38tf

ALLSTATE INSURANCE

UTO - BOAT - COMMERCIAL LIFE - HEALTH - HOME Phone Eves. or Week-ends for

N. H. MILES, Agent
GR 5-8334

WANTED—3-bedroom or more house to rent in Chelsea school district. Prefer country. 475-2089. x34tf

ALCOA SIDING SPECIALIST—Since 1938. Old sash, wood window replacement in aluminum. Aluminum combination and regular, in colors. Also gutters, shutters, sills and wood covered. Roofing. Service and workmanship guaranteed. William Davis (dial slowly, 663-6635). x44

SALESMEN WANTED—Full or part-time. Quality non-polluting soap products. Competitively priced. Bestline Products. If interested call 761-3596. x44

FOR SALE—Alto sax, B-flat clarinet. \$50 each. Ph. 475-8030. x44

WANT ADS

1971 MUSTANG Grande V-8, auto., power steering, AM radio. Light brown with dark brown vinyl roof. \$2695. Devon Lincoln-Mercury, 2100 W. Stadium, Ann Arbor. Ph. 662-5555. x38tf

R & H TREE EXPERT—Trimming, cabling, nailing, take downs. Fully insured. Free estimates. 475-3541. x2

1968 CHEV NOVA 2-dr. 6-cyl., auto. \$1195. Devon Lincoln-Mercury, 2100 W. Stadium, Ann Arbor. Ph. 662-5555. x38tf

Headquarters for
RED WING WORK SHOES
Foster's Men's Wear

Power Equipment
Headquarters

See Us for Good Buys in
SIMPLICITY - LAWN BOY
McCULLOCH - PROVEN BRAND
PARKER

Chelsea Hardware

WANT ADS

FOR SALE—Ford 9N tractor with blade. Ph. 475-8552. x44

WANTED TO RENT—Room, apartment, or cottage in quiet area. Call 475-2541. x39tf

PITTSBURGH PAINT SALE

BUY NOW AND SAVE!

FLAT LATEX—Regular \$8.73 gal. NOW \$6.19 gal.

LO-LUSTRE LATEX
Regular \$3.57 qt. NOW \$2.43 qt.

SEMI-TRANSPARENT STAINS
Regular \$7.13 gal. NOW \$4.98 gal.

Chelsea Hardware

FOR RENT—Apartment in the country. 1 bedroom, upstairs. Utilities furnished. Phone 428-3592. x44

ATTENTION, MOTHERS—Looking for a babysitter this summer? Responsible, experienced, 15-yr.-old girl would like to babysit in your home. Please phone Laura. 475-2876. x44

WANT ADS

YARD AND HANDYMAN to assist with garden, lawn, and home renovation. 5 or 6 hours per week through the season. 475-8958 after 6 p.m. x47

THORNTON 475-8629

ANXIOUS OWNER—4 bedroom, 2 baths, good home, close to elementary schools. \$27,500.

OWNER TRANSFERRED—Large tri-level in North Lake area; 2 fireplaces, 2 full and 2 half baths, recreation room; situated on 2 wooded acres.

CALIFORNIA CALLS—so owner is leaving this large, large home on West Middle close to town; 5 bedrooms, carpeted living room, 3 fireplaces, one in upstairs bedroom, nice yard.

GRASS LAKE—Three bedrooms, full basement, close to schools; 2 to choose from, both in mid-20's.

LARGE FAMILY? Go thru this 4-bedroom, 2-bath home. Just a short walk to Middle school and High school. A great spot for kids!

BUILD YOUR OWN HOME—

1 Acre—Ivey Rd.
3 Acres—Fletcher Rd.
5 Acres—Cassidy Rd.
10 Acres—Cassidy Rd.
35 Acres—Steinbach Rd.
38 Acres—Cassidy Rd.

Robert H.
THORNTON
Realtor

Eve:
Bob Riemenschneider 475-4121
Helen Lancaster 475-1198
John Pierson 475-2064
Robert Thornton 475-8857 x44tf

FOR SALE—2-acre building sites on blacktop 12 miles north of Jackson (Leslie school area). \$2,400 cash or terms. Dial 1-517-522-8328. x45

TOOLMAKERS TOOLS (used)—micrometers, depth gage, bore gage, dial test indicators, magnets and misc. tools. All in A-1 condition. Half price. Ph. 475-7612. x45

WANTED TO RENT—2-bedroom apt. Need by June 15. Call collect Flint (313) 732-2676, evenings. x44

PLANT 16 ACRES of corn and keep crop. Ph. 475-5548. x46

WANT ADS

WILL NEED BABYSITTER in my home. Call 475-7095, 6 a.m.-3:30. x44

MALLARD DUCKS—Wild breed, \$5 per pair. If ordered, will hold for short time. 475-8286. x44

LAKE FRONT

COMMERCIAL PROPERTY located 14 miles N.W. of Ann Arbor on Silver Lake. Includes 3-bedroom home, 110 ft. lake frontage and duplex with electric heat. Presently all rented. Price \$40,500. 20% down, Bank Financing. Owner: Eric Gates, Area Code: 517-723-5182 or 723-7103. x44

RIDE NEEDED—U of M employee needs ride to work. Lives on Old US-12 near expressway. 475-2589. x44

REAL ESTATE

READY FOR HORSES—This 4 1/2-acre plot. Small barn, nice, stream with 4-bedroom brick home. CO 8887.

10-ACRE vacant parcels in Chelsea, Dexter, Stockbridge area.

2-BEDROOM HOME with nice wooded lot. Access to Portage Lake, new garage, blacktop road. LHP 9855.

OWN YOUR OWN 3/4-acre mobile home site with well, septic, and electricity in. MHS 9518.

240-ACRE FARM near Fowlerville. Set up for feeder cattle. Plenty of silos, barns, good fencing and two houses. LF 9819.

NEAR OAK GROVE, 45 acres with two houses, horse barn, secluded. Many acres of state land adjoining property. SF 9786.

Howell Town & Country, Inc.

CARLIE WIEDMAN
Local Representative
426-3768 or 878-3177 x45

ELLIS PRATT

428-8562

Spear & Associates

Realtors

FARM BROKERS

769-5750

67 ACRES—5-bedroom home, 3-car garage, Saline schools

334 ACRES—10-room house. A farmer's farm. Western Washenaw county.

55 ACRES—Rolling land, live stream, Manchester schools, \$700, per acre.

35 ACRES—Next to Dexter, water and gas to property, ready for development.

ELLIS PRATT

428-8562

Spear & Associates

Realtors

FARM BROKERS

769-5750 x44

XEROX COPIES made. Merkel Brothers.

41tf

MARSHALL REALTY

440 Dexter-Pinckney Rd.
Ph. Pinckney 878-3182

318' of water frontage on a peninsula with a very sharp 2-bedroom home, dining room and large enclosed porch. 1 1/2 baths and basement. Hiland Lake.

6-BEDROOM older farm house on 60 acres. Pole barn and pond potential. Has orchard and pond potential.

VERY NICE 10-acre parcel. Rolling and high on blacktop road. Large selections of other parcels.

WE HAVE MANY buyers for property in this area. Many have cash. If you are considering selling.

MARSHALL REALTY

440 Dexter Road
Pinckney, Michigan
1-313-878-3182

Evelyn, 475-8583 - JoAnn, 475-7498
Dave, 475-7275 x44

FOR SALE—2 tires and wheels, 6:50x13. Cheap. Call 475-7624 after 3:30. x44

HELP WANTED—16- to 18-year-old boy for all-round general clean-up and handy man work. Apply to Mr. Sutherland, Polly's Market, 1101 M-52. x45

FOR SALE—Simplicity riding mower. Like new condition. \$145. Ph. 475-8525. x45

WANTED—3-bedroom house to buy or rent. June occupancy. Phone 475-8651, ext. 217. x44

WANT ADS

FOR SALE—Inlaid vinyl and linoleum. Also tile. Armstrong and Congoleum Nari. Installed by skilled craftsmen. Estimates, terms. Merkel Bros. 475-8621. x32tf

3-BEDROOM HOME. Walk-in basement. About 1/2 acre land. Vinyl siding. Reasonable price. Come see. 5680 M-52 or dial 851-8836. x44

FOR SALE—Very good coats, \$5 and under. Ph. 475-2877. x44

COMPLETE BOOKKEEPING SERVICES. Pick-up and delivery. Ph. 428-8131 days, 428-7243 evenings. x46

1968 LARSON 15 1/2' fiberglass boat, Mercury 50 h.p. motor. With top and accessories. Good condition. Ph. 475-4335. x45

FOR RENT—House in Chelsea, available June 1. References required. Box AP-13. x45

SECRETARY—Typist, short-hand helpful. Personnel Systems, 1945 Pauline, Ann Arbor. Ph. 761-6252. x44

BABYSITTER WANTED to live in. For 2 school-age children. Call 475-8196 or 498-2618. x44tf

WANT ADS

SMALL FAMILY wants to rent house, with option to buy, in Chelsea school district. Call (517) 851-8945. x44

LAWN WORK WANTED—Light hauling. High school boy. 475-2442. x46

FOR SALE—Massey-Ferguson riding lawn mower. Needs some work. 475-2988 after 3:30. x44

SCENIC TRAIL RIDES—Sharon Hills Ranch. Call noon or evenings. 428-9452. x44tf

1967 FORD WAGON, Country Squire, automatic, V-8, power steering, radio. Clean condition. Priced to sell, \$995. Ph. 475-2217. x44

THE SUREST WAY to get BIGGER YIELDS is to have Pioneer Brand Seed Corn in your field! See or call your Pioneer man, Homebergers, Inc., Chelsea. Phone 475-3611. x44

FOR SALE—Refrigerators, 7936 Fifth St., Dexter. x44

SPRING CLEAN-UP—Odd jobs, raking, etc. Guaranteed satisfaction by a supervised church youth. 475-8323. x45

TODAY'S THOUGHT

By LOUIS BURGHARDT



Society is strengthened or weakened by the kind of people in it. It seems in one respect at least, there is a steadily growing weakness—a startling diminishing strength in our society.

For example, smutty language is widely accepted with the time-worn and trite cliché of calling a spade a spade. But why must the spade reek with filth and dirt to be understood? Is it not a sad indictment of our times that eloquent profanity seems to have popular acceptance? Why is shameful language often tabooed in gruff conversation in the past—now familiarly used by supposedly nice people in nice places?

Why is it not realized that smut molests not only our language, but sensitive ears as well? When the smut is seen in print in best selling novels—why don't our eyes squint in rejection? God wants us to be pure in mind, but that can never be when we accept dirty semantics which destroy the influence we may have for cleanliness of mind and expression. . . . BURGHARDT FUNERAL HOME, 214 East Middle St., Chelsea, Mich. Phone 475-4141.

SPECIALS

12-OZ. CAN NIBLETS

Corn 2 for 39c

GRADE A LARGE WHITE

Eggs doz. 42c

1-LB. PKG. ECKRICH SMORGAS PAC

Lunch Meat 85c

6 1/2-OZ. CAN CHICKEN OF THE SEA

Chunk Tuna . . . 2 for 83c

JELL-O

Instant Pudding, 3 pkgs. 35c

We have white and yellow onion sets

Bulk and Package Garden Seeds.

KUSTERER'S

FOOD MARKET

DIAL 475-2721 WE DELIVER



ANY TRIP YOU MAKE will be more

pleasant, if the car you drive is financed

the Bank Way—economically,

conveniently and with local people.

CHELSEA HARDWARE

110 South Main St.

Phone 475-1121

SPRING SALE of GUARANTEED SPECTACULARS

BUCKBUSTER
BOW RAKE
73

BUCKBUSTER
GARDEN HOE
74

BUCKBUSTER
Garden Master
22" DeLUXE MOWER
Briggs & Stratton engine. Chute, rear guards.
\$87.99

BUCKBUSTER
16' EXTENSION LADDER
Rugged "I" beam-type construction. No-slip feet top bumpers.
\$14.99

BUCKBUSTER
2-SLICE TOASTER
Gleaming chrome. Toasts to your liking.
\$7.99

BUCKBUSTER
10" PORTABLE FAN
Whirls up a storm for cooling. Tilts to suit.
\$8.99

BUCKBUSTER
3/8" DRILL
Double insulated. Tough, hard, plastic housing.
\$11.99

BUCKBUSTER
50' EXTENSION CORD
For power tools, bar-b-que, yard lighting. 3 wires.
\$2.99

BUCKBUSTER
VINYL GUARD FLOWER BORDER
Vinyl cover protects from rust. With 7 stakes.
\$3.99

House & Garden BUG KILLER
Kill insects in and around your home. No DDT.
77c

BUCKBUSTER
3/8" DRILL
Double insulated. Tough, hard, plastic housing.
\$11.99

BUCKBUSTER
50' EXTENSION CORD
For power tools, bar-b-que, yard lighting. 3 wires.
\$2.99

BUCKBUSTER
VINYL GUARD FLOWER BORDER
Vinyl cover protects from rust. With 7 stakes.
\$3.99

COUPON
LADIES House & Garden GLOVES
67c PAIR
LIMIT 1 PAIR WITH COUPON

COUPON
5/8" x 75' FLEXIBLE HOSE
\$8.99
LIMIT 1 WITH COUPON

COUPON
20-26 GAL. LEAF & REFUSE BAG
\$1.27
LIMIT 1 PKG. WITH COUPON

SWISS STEAK SUPPER

THURSDAY, APRIL 27
at St. John's United Church of Christ
Francisco, Mich.

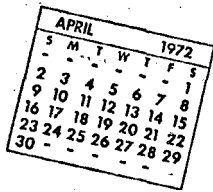
Continuous serving, 5:30 p.m. to 7:30 p.m.

ADULTS, \$2.50 CHILDREN under 12, \$1.00

For tickets call Chelsea 475-8575 or Chelsea 475-8357.

CHELSEA STATE BANK

Member Federal Reserve System **FDIC** Member Federal Deposit Insurance Corp.

Community
Calendar

Mt. Hope Cemetery Association meeting on Thursday, April 27, 8 p.m. at the Freedom Township Hall, 11508 Pleasant Lake Rd., Manchester, Mich. adv44

VFW Auxiliary, social meeting, April 24, 8 p.m. in the Rebekah Hall. Guests welcome.

Never Rest Farmers, Friday, April 21, 8 p.m. at the Don Lauer home.

Willow Creek Women's Tuesday Golf League, Saturday, May 6, 2 p.m. at Willow Creek golf course, Stockbridge.

Cub Scout Pack 445 Monday, April 24, at 7:30 p.m. in the Chelsea High School gymnasium.

OQE, April 24, 8 p.m. at the high school.

Cub Scouts Pack 415, Tuesday, April 25, at 7:30 p.m. in the high school cafeteria.

Cub Scout Pack 415 committee meeting Thursday, May 4, at the home of Yvonne Adkins, at 8 p.m.

Inverness Club members spring dance, Saturday, April 22, 9 to 1 p.m.

Past Noble Grands April meeting, Thursday, April 27, 7:30 p.m. at Joyce Dietle's. Notice change of date.

All interested persons are invited to attend the annual meeting of the Washtenaw County Medical Care Auxiliary, Juvenile Court Center on Platt Rd., Thursday, April 20 at 1:30 p.m. Guest speaker, Dr. David Peterson of the Institute of Gerontology. Business will consist of election of officers, annual reports and changes in the name and purpose of the organization.

OES Rummage Sale, Masonic Temple, Friday, April 28, 9 a.m. to 9 p.m. and Saturday, April 29, 9 a.m. to 1 p.m. For pick up call 475-8913, or 475-1414. —adv45

American Legion and Auxiliary hospital equipment available by contacting Don O'Dell at 475-8249.

Chelsea Co-operative Nursery now accepting applications for fall 1972 enrollments. Phone Shari Roberts, 475-7522 or 475-8904.

Pap tests are free for all area women, Tuesday mornings, at St. Joseph Mercy Hospital, Ann Arbor. Call American Cancer Society office, 668-8857, for appointment.

Wolverine Farm Bureau, April 25, 8:30 p.m., at the home of Martin Ruhlberg, Jr., 11296 Island Lake Rd.

St. Barnabas Episcopal church Spring Luncheon, April 27, at the church. Casseroles and salads. 11:30 a.m. to 1:30 p.m. Tickets \$1.50. —adv45

Public Card Party, 8 p.m., April 22, Masonic Temple. Sponsored by CES.

Chelsea Community Fair Board meeting April 25, 9 p.m. at Fairgrounds.

Esther Chapter Congregational church, Thursday, April 20 at 8 p.m. at church.

Spring Bazaar Saturday, April 28th, 9 a.m. to 9 p.m., in Penney's foyer at Ann Arbor, Ann Arbor. Handicrafts and baked goods. Proceeds to Spaulding for children an adoption agency working to find homes for parentless children with special needs. This event sponsored by Spaulding's Auxiliary. —adv.

The Chelsea Chapter of the Future Farmers of America will hold its annual "Slave Sale" Monday, May 1 at 8 p.m. in the Chelsea High school agriculture room. Members will be sold at auction for a day's work. Proceeds go to finance future FFA projects. adv44

Inquiries regarding the Chelsea blood bank may be directed to Harold Jones in the event that Mrs. Dudley Holmes is unavailable, or to Mrs. Pauline McKenna, American Red Cross in Ann Arbor, 971-5300.

Senior Citizens April birthday party at the Korner House April 20, at 6:30. A potluck dinner is planned by the committee, Margaret Dietle, Alma Bahnmiller, and Bernice Schneider.

Chelsea Suburbanettes, at the home of Mrs. Duane Luick, April 20 at 8 p.m.

Youth for Christ
Sponsoring Rally
With Author

Teen-agers and adults are invited to see and hear the Rev. David Wilkerson, author of "The Cross and the Switchblade," this coming weekend at the Crisler Arena in Ann Arbor. Programs are scheduled for 7:30 p.m. on Saturday evening, April 22, and for 8 p.m. Sunday, April 23. The event is sponsored by the Youth Crusades Ministerial Fellowship.

Local residents who need or wish to share rides are asked to call Mrs. Paul Hemman, 426-8808, for transportation assistance.

A benefit coffee hour will be given Friday, April 21, at 9 a.m. at the home of Mrs. Raymond Denoyer, 4734 North Territorial Rd. Preschoolers are invited to come with mothers. Call 426-8914 if more information is desired.

The book is the thrilling true story of Wilkerson's success in dealing with teen-age crime and problems in big-city slums. Now Wilkerson is the leader of Teen Challenge, a fast-growing movement which is helping "lost" boys and girls find themselves through finding God.

DEATHS

Mrs. Thomas Hoskins

Dies at Area Nursing Home
Following Extended Illness

Ida Hoskins died Tuesday, April 18 at the Ranck's Green Meadows nursing home. She had been a patient at the nursing home since Nov. 20, 1971 previously living at 1708 Ridge Rd.

Mrs. Hoskins was born Feb. 4, 1893 in Cannel City, Ky., the daughter of R. E. and Mary Jane Patrick Blum. She married Thomas Hoskins on June 7, 1902. Mr. Hoskins died in 1962.

She is survived by three sons, Harless, Tavares, Fla., Arthur, Loudonville, Ohio, and Herschel of Chelsea; five daughters, Mrs. Flora Hoskins, Mrs. Eugene (Flossie) Hageman, and Mrs. Woodrow (Dol) Gullett, all of Chelsea; Mrs. Lizzie Patrick, Mansfield, O., and Mrs. George (Carrie) Karris, Warner Robbins, Ga.; 21 grandchildren, 25 great-grandchildren, and two great-great-grandchildren.

She was preceded in death by her husband and two sons, Louis, who died May 24, 1952 and Luther who died June 6, 1965.

Funeral arrangements are made for Friday, April 21, 2 p.m. at the Staffan Funeral Home with burial following in Oak Grove Cemetery.

Russell G. Olson

Former Chelsea Resident

Dies in Tacoma, Wash.

Russell G. Olson died March 22 in Tacoma, Wash. Born in Detroit, Aug. 20, 1922, he was the son of Russell E. and Lucille Spear Olson. A 1940 graduate of Chelsea High school he was employed as food administrator at the Federal penitentiary on McNeil Island, Steilacoom, Wash.

He is survived by his widow; two sons, Grayden, Tacoma, Wash., and Gordon, Portland, Ore.; one daughter, Gaye; six grandchildren; and a sister, Naida Taton of Ann Arbor.

Robert Hall

Former Chelsea Resident

Dies in California

Robert Hall, a long-time resident of the Chelsea area, died April 10 in San Pablo, Calif., after a long illness.

A native of Philadelphia, Pa., Mr. Hall was a retired personnel officer of Standard Oil Company's Richmond, Calif. refinery. He is survived by his widow, Patricia; his son, Robert, a resident of Jackson; a sister, Mrs. Hannah Van Natter, and three grandchildren. The family home is at 5318 Barrett Ave., El Cerrito, Calif.

John A. Scholtens

Chelsea Man's Brother

Dies Monday in Florida

John A. Scholtens, 62, died Monday, April 17 in Bradenton, Fla. Born Dec. 10, 1909 in Ionia, he was employed as chief engineer at state institutions in Ionia, Marquette, and Jackson. Following his retirement in July, 1969, he and his wife, Gladys, moved to Florida.

He is survived by his widow, two sons, Russell of Traverse City and William R. of La Mesa, Calif.; three brothers, Ross of Chelsea, Robert of Ionia, and George of Detroit; two sisters, Mrs. Hazel Kienitz of Grand Rapids and Mrs. Evelyn Dion of Parchment, and three grandchildren.

Funeral arrangements were made by the Myers-Roetman Funeral Home, Ionia.

Subscribe Today to The Standard!



In case of fire do you have "ready money" to rebuild? Better get

Auto-Owners

Fire

Insurance

See your A-O Man

A. D. MAYER

AGENCY, INC.

"Your Protection Is Our Business"

115 Park St. Chelsea

Phone 479-5061

Auto-Owners

INSURANCE COMPANY

Home office at Lansing, Michigan



SCHOOL ART SHOW: North Elementary school art department presented a showing of student art work Tuesday evening, April 18, from 6:30 to 8:30 at the school. The James Stirling family, 45 Chestnut Dr., was one of the many families enjoying the exhibit. The Stirlings moved to Chelsea from Waukesha, Wis., in January, 1971. Stirling is employed by Xerox Corp. Their daughters, from left to right, are Cindy, a pre-schooler, Carol, kindergarten, and Margaret, 3rd grade.

Sound of Music
Auditions Set
For June 13-14

"The Sound of Music" will be presented by Chelsea High school on July 28 and 29 at 8 p.m. Try-outs for the musical will be held on June 13 and 14 in the high school auditorium, beginning at 5:30 p.m. and lasting until 9:30 p.m. Audition material may be obtained from DiAnn L'Roy at the high school beginning May 30.

Interested persons and former students may contact Miss L'Roy for further details either at the high school or by calling 759-9466.

Persons wishing to play in the orchestra should also contact Miss L'Roy. Musicians should realize, however, that their services will be on a voluntary basis and not paid positions. There will be orchestra rehearsals on a regular basis.

Rehearsals for the play will start June 19, and be held each Monday, Tuesday, and Thursday night until two weeks before performance. During the last two weeks there will be rehearsals Monday through Friday. By having a six-week rehearsal schedule instead of eight hours of rehearsal so it is important to realize that all persons will be required to attend all rehearsals.

Children wishing to audition should have their own transportation and their parents should be aware that rehearsals will last at least three hours. This information is not given to discourage persons from auditioning but rather to realistically set forth what will be required so schedules may be arranged and persons do not have to drop out because they cannot fulfill their obligations.

Any person who wishes to assist in publicity, make-up, tickets, set construction or painting, ushering, lighting, costumes should contact Miss L'Roy.

Telephone Your Club News
To GR 5-3581.

Chelsea Cribbage
Tournament Has
Room for More

A rather tight turnout for the first round of the Chelsea Area Cribbage Tournament has not discouraged its sponsor, the Chelsea Jaycees. The tournament will proceed as planned with the next round scheduled for Monday, April 24, at 7 p.m. in the high school cafeteria. Anyone interested in playing competitive cribbage may still enter at that time.

Standings as of April 17

	W	L
Lena Norris	7	3
Ralph Castleman	6	4
John Norris	6	4
Allice Moore	5	5
Art Steinaway	5	5
Darlene Snyder	4	6
Rick Gilmore	4	6
Jack Pfeifle	3	7

Four Debaters
Win Certificates
From Free Press

Four students from Chelsea High school have been awarded Certificates of Merit by the Detroit Free Press for having distinguished themselves as outstanding debaters. The four are: Daniel Gaunt, Carol Fairbrother, Michael Hergert, and Charles C. Lane. (The students participated during the 1971-72 season in the Michigan High School Forensic Association debate series, sponsored by the Free Press and the University of Michigan Bureau of School Services.)

The topic debated was: "Resolved: That the jury system in the United States should be significantly changed."

Dollars for Scholars . . .

(Continued from page one)

Sponsoring the National Honor Society's project this year is June Winans. Student chairman of Tag Day is NHS president Marty Straub.

PROCLAMATION

WHEREAS, the National Honor Society in conjunction with the Scholarship Committee recognize the need of deserving Chelsea High seniors, and

WHEREAS, the National Honor Society in concurrence with the Scholarship Committee is aware of the rising costs of college attendance, and

WHEREAS, the National Honor Society and the Scholarship Committee wish to aid their graduating seniors in their first year of college education,

NOW, THEREFORE, BE IT RESOLVED, we declare Tag Day in Chelsea this coming Friday, April 21 and Saturday, April 22, and urge all citizens to help us in providing scholarships for our deserving seniors.

A. E. Fulks, President
Village of Chelsea

Recreation
Council Briefs

The Recreation Council has voted to support a women's softball league. The league will hold an organizational meeting on Thursday, April 27 at 7:30 p.m. in the Chelsea Municipal Building. Interested players or coaches are asked to contact Dede Ringe at 475-2866.

A Howard Treado Memorial basketball trophy case will be built at the high school. It will be adjacent to the present trophy cases and will be paid for from the Treado Memorial Fund.

A successful golf class has ended. The Recreation Council is very grateful to instructor George McKelighan for his efforts.

Winter tennis program has three weeks to run, and will be concluded on outside courts.

Recreation Council will have a complete audit of its financial records. President Gene Miller and treasurer Ginny Johnson will implement.

Next meeting will be May 8, at the home of Ginny Johnson, 550 Howard Rd., at 7:30 p.m. Guests are welcome. Please call the host in advance.

Summer program plans were tentatively approved as given. Enrollment will dictate some changes.

MORE LOCKS

In the last five years there has been a boom in lock sales - up 100 percent.



TIRES - BATTERIES - ELECTRONIC TUNE-UPS
BRAKE SERVICE - WHEEL ALIGNMENT - WRECKER SERVICE

Fred's Standard Service

889 S. Main, Chelsea Phone 475-2804

PROBLEMS??
That's why we're here!

Trust us. We're the guys who know the inside story... and our shop is equipped for any car emergency. Service is our specialty. So bring your problems to us.

SPECIAL

thru Wednesday, April 26, 1972

BRAZIER
BAR-B-Q
FRENCH FRIES
& Small Shake

99¢

(Some of the Brazier foods)

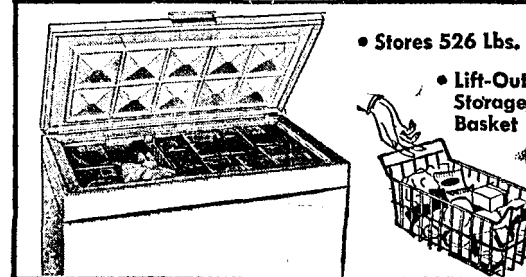
Dairy
Queen

brazier

901 S. MAIN ST., CHELSEA PHONE 475-2677

GAMBLES

FREEZER SALE

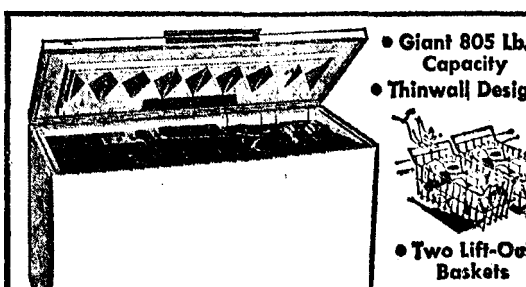


Coronado 15 Cu. Ft. Chest Freezer

Priced to fit your budget... designed to fit all your freezer needs! 15 cu. ft. chest holds 526 lbs. Lift-out basket, safety lid, balanced cold control, 4-way warranty. 44-8030

\$179⁹⁵

Use Your Credit



Coronado 25 Cu. Ft. Chest Freezer

Get the most value per cubic foot! Giant 805 lb. capacity freezer boasts 2 lift-out baskets holding 33 lbs. each! Signal light, cold control, lock, drain, 4-way warranty. 44-8039

\$249⁹⁵

Use Your Credit

HERE! NOW!

Andersen Vinyl-Clad 'Thermopane'

NARROLINE WINDOWS

(The Country's Leading Wood-Window Value)

IN STOCK AT CHELSEA LUMBER

Where You Get The BIG

Year-Round Discount

On All Andersen Products.

21% off

DELIVERED TO YOUR JOBSITE!

- WHEN IT COMES TO WINDOWS -

Come to CHELSEA LUMBER

CAR WASH SATURDAY, APRIL 22

at Pump & Pantry
From 8 a.m. to 6 p.m.

Sponsored By
Chelsea High School Junior Class

MILK

THE
PROTEIN
SNACK

Teenagers think that milk tastes

"just terrific"

Socializing, alone, or with the gang, anytime is the right time for a teenager to help himself to a delicious glass of healthful milk.



There's a world of health in a glass of milk!

Hickory Ridge Farm Dairy

(Successor to Weinberg Dairy)
Stockbridge Mich. Phone (517) 851-3000

Kiwanis Club Speaker Discusses Village Growth

Paul Corrado, a student working on his master's degree in urban planning at the University of Michigan, addressed the Kiwanis Club Monday, April 10, presenting a carefully researched analysis of Chelsea's community needs, including an update of the three-year-old Master Plan.

Originally studying the area to fulfill a minor school assignment, Corrado expanded his research into an in-depth term project. Unlike other students of urban planning who oftentimes gain a rather shallow understanding of a community through the use of textbooks and statistics, he actually spent a great deal of time in Chelsea, getting first-hand impressions of the community and its residents.

Using the Master Plan's projected population growth figure of 8,000 inhabitants in the year 1990, Corrado discussed the possible effects in the village as a whole, stressing the importance of wise land use to preserve open tracts of land surrounding the community.

He found that the people of Chelsea do not want to impede the forces of progress, but want a controlled and orderly growth. How-

ever, he feels that steps must be taken soon to consolidate the community, especially the central business district.

Noting the sprawling pattern of businesses up and down M-52, he maintained that it would be advisable, in the interest of the town's future, to make the downtown area more attractive to prospective business ventures. He believed that the central business district can survive if the merchants get together and work at it.

One means of attracting prospective customers, which he suggested, was the organization of a mass transportation system similar to Ann Arbor's Dial-a-Ride. These minibuses do not travel a prescribed route, but rather, respond to individual calls, depositing shoppers at designated stops in the shopping district. This system would enable many of Chelsea's citizens to reach the downtown shopping area who are now either too young or too old to drive a car. Realizing that the village itself could not institute such a system, especially since it is currently involved in extensive water, electrical, and sewage pro-

jects, he suggested the Businessmen's Association underwrite the initial expense.

Corrado based his proposal on the fact that because of the Methodist Home Chelsea has a disproportionate number of elderly people living in the community who oftentimes are unable to walk or secure a ride downtown. He believes that even a couple of small buses would enable these people to reach stores in town.

He also suggested creating a widespread system of parks with bicycle lanes so that young and old alike would have recreational outlets.

In another effort to check the sprawling tendency that generally occurs as towns increase in population, he suggested multi-family housing to insure a high density residential area.

Tom Dimoch, a Kiwanis member who invited Corrado to address the club, believed that he had raised some interesting points, but added, "None of these plans will implement themselves." He feels if Chelsea is to handle its future growth in a constructive manner it will demand the total support of the community. The Village Council, Planning Commission, and service clubs must combine their efforts in providing constructive thought and money.



PLANNING PROJECT: Discussing the points raised concerning future village development during the Kiwanis Club's weekly meeting held Monday, April 10, are, left to right, Superintendent of Schools Charles Cameron, Kiwanis Club President,

George Staffan, 2nd vice-president, Charles Cox, Tom Dimoch, guest speaker, University of Michigan student in urban planning, Paul Corrado, and V. O. Johnson.

OFFICE SPACE FOR RENT

500 sq. ft.

Recently remodeled.

MERKEL BROS.

Phone 475-8621

Earn Degrees at Eastern Michigan

Mr. and Mrs. Mark Lancaster of Ypsilanti, received their Bachelor of Science degrees at graduation ceremonies at Eastern Michigan University, Sunday, April 16. Mrs. Lancaster, the former Mary Kay McIntyre, received a certificate in secondary education.

Mark is the son of Mr. and Mrs. Charles Lancaster of Chelsea and his wife, Mary Kay, is the daughter of Mr. and Mrs. Donald McIntyre of Frankfort.

Ellis Pratt Joins Area Realtor Firm

Ellis Pratt of Manchester has been named a sales associate for Spear & Associates realtors. Pratt, who is chairman of the Sharon Township Zoning Board and chairman of the Sharon Township Board of Appeals, will be active in listing and selling houses and farms in the Manchester, Clinton, Chelsea and Saline area.

Pratt has been a resident of the Manchester area for 45 years.

Educational Assessment Test Scores Are Being Received

The first results of the 1971-72 Michigan Educational Assessment Program, conducted by the Department of Education, have been received by Chelsea elementary and middle schools principals. These results are individual pupil scores on word relationships, reading, mechanics of written English, mathematics, and composite achievement.

Individual pupil scores may be appropriately used by school personnel in counseling with students and parents. Since the test scores are personal information, they are considered confidential and will not be made a part of the public record, but will become a part of the pupil's school file.

Purpose of these results is to provide school districts with basic information regarding students that will help the students, their parents, and educators to assess their progress. Additionally, this information will be used by local educators to identify students who have extraordinary need for assistance to improve their competence in the basic skills. This assistance might take the form of appropriate curricular emphasis.

It should be noted that many areas of pupil achievement and development are not included in the assessment battery. It must be remembered that the goals of local schools are much broader than were tested in this battery. Therefore persons wishing to judge the over-all achievement of pupils must look to additional measures for judgment in other areas of pupil development.

(When the school district receives the cumulative results for each school they will inform the community.)

Warrant Issued By Police for Robert D. Brown

A warrant was issued Monday, April 17, for the arrest of Robert D. Brown, 8636 Plainwell Dr., Gregory, charging him with assault and battery for allegedly beating his ex-wife on April 16.

Brown has previously been tried and found guilty on two separate charges of assault and battery and has pled guilty and been found guilty on two separate charges of malicious destruction of property. Each of the charges have been filed by his ex-wife, Mrs. Penelope Brown, 237 Railroad. Out on \$100 bond, sentencing for Brown on these charges is set for April 24.

However, the latest charges remain unanswered as police efforts to arrest him have been unsuccessful. He has not reported for work at the Federal Screw Works for the last four days nor has he been seen in the community since the issuance of the warrant.

Police Chief George Meranuck explained that his name has been fed into the LIEN (Law Enforcement Information Network) machine which will provide officers throughout the state with a description and information concerning the arrest warrant. Any statewide officer who should happen to stop Brown will run a routine check through the network and notify the Chelsea police of his whereabouts.



QUALITY LENSES

and
FRAMES

Many styles.
Reasonable prices.

PAY LESS
FOR
THE BEST

WINANS OPTICAL

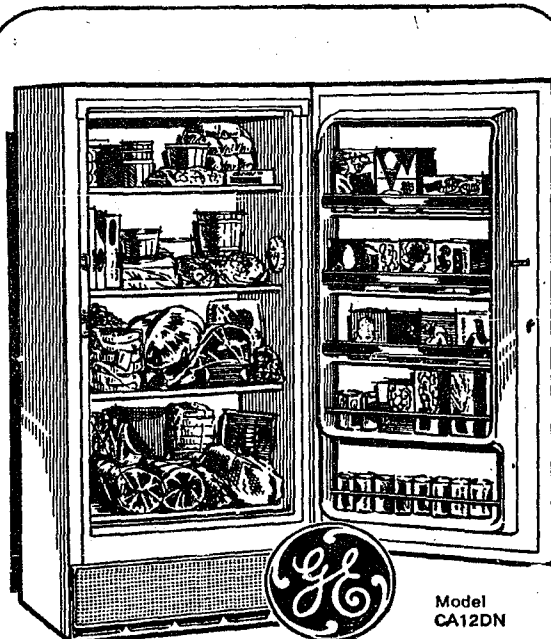
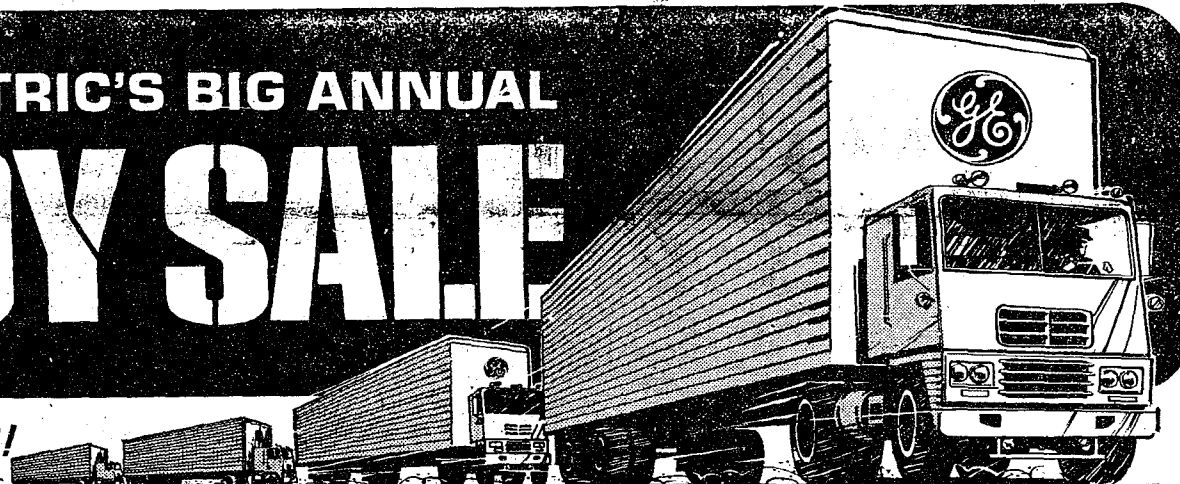
Phone 475-1233
114 N. Main St.
(In Sylvan Hotel)
CHELSEA, MICH.

DAVID WINANS
OPTICIAN

APPOINTMENTS
NOT NECESSARY

GENERAL ELECTRIC'S BIG ANNUAL CONVOY SALE

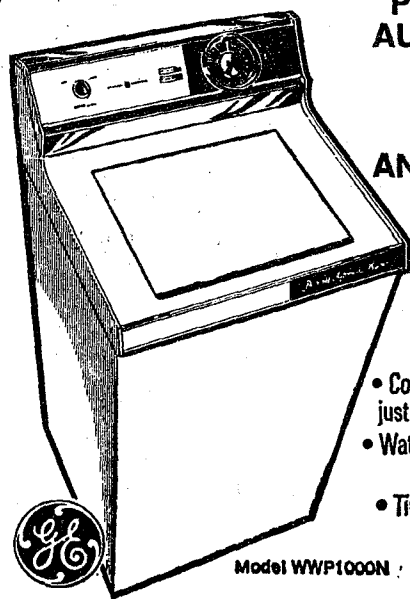
DIRECT-FROM-FACTORY SAVINGS!



ECONOMY FOOD FREEZER
for young families

- 11.6 cu. ft. model stores 406 lbs.
- Upright convenience — less bending, stooping
- 4 convenient door shelves, juice can storage shelf
- Adjustable temperature control
- Built-in lock

\$189⁹⁵

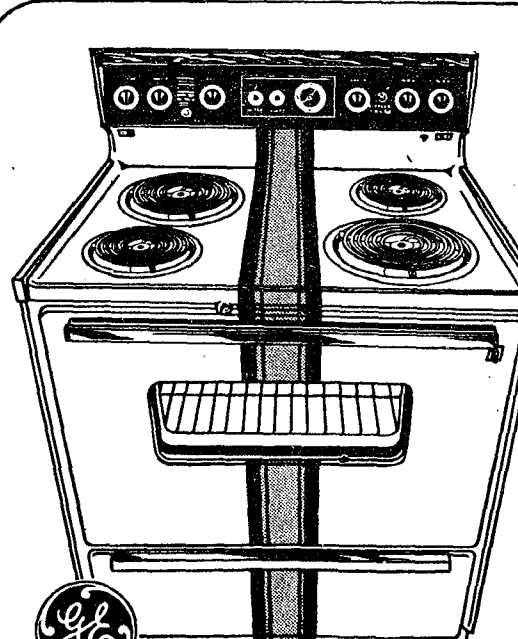


**PORTABLE
AUTOMATIC
WASHER
GOES
ALMOST
ANYWHERE**

- Portable, equipped with casters
- Plugs into any 15-amp. household outlet
- Compact, measures just 21" x 21" x 36"
- Water level selector, high or low fill
- Timer control, from 2 to 12 minutes

**COMPACT, PORTABLE
AUTOMATIC
DRYER**

- Equipped with casters
- Three times cycles including permanent press
- Plugs into any 115 v. electrical outlet
- Convenient up-front filter



**P7 Oven Cleans Itself
Electrically**

- 30" Total Clean™ oven range
- Picture window oven door
- Automatic clock, timer, minute timer
- Floodlighted oven, fluorescent illuminated cooktop
- Large storage drawer, two appliance outlets

\$339⁹⁵

113 N.
Main St.

HEYDLAUFF'S

Phone
475-1221

HONEGGER'S & CO., Inc.

Phone 475-3611

Chelsea, Mich.

Seeds! Seeds! Seeds!

We Have in stock:

TEWELES

- ★ SUPER-STAN (10 ton per acre)
- ★ DURA-STAN (6-year rotation)
- ★ MULTI-STRAIN II (3-year rotation)
- ★ SOCHEVILLE (Green Crop)
- ★ CERTIFIED VERNAL
- ★ CERTIFIED SARANAC
- ★ TIMOTHY
- ★ BROME GRASS

the city of Ann Arbor, County of Washtenaw, Michigan, and are described as:

Lot 78, Arbor Oaks Subdivision No. 1, City of Ann Arbor, Washtenaw

BANK OF THE COMMONWEALTH, a Michigan Banking Corporation of Detroit, Michigan, Mortgage, dated Oct. 1, A. D. 1909, and recorded in the office of the

519.75 feet along the center line of
Michigan Avenue; thence S. 22°46'10"
E., 216.48 feet; thence N. 67°14'20" E.

costs, charges and expenses, including the attorney fees allowed by law, and also any other sums which may be paid by the County of Washtenaw, and State of Michigan, and described as follows, to-wit: Lots numbered 1430 and 1440, Wat

Carolyn A. Smith, Secretary

BOARD OF EDUCATION

Carolyn A. Smith, Secretary

100

The University of Michigan was one of nine schools in 1971 to form a unique non-profit corporation—the Common Fund for Non-profit professional investment management of college and school endowment funds.



HAGGAR
slacks

**Doubleknits
for any
occasion**

Haggar doubleknits! You hardly know you are wearing slacks. 100% Fortrel polyester double-knit fashioned as only Haggar can with wide belt loops and a gentleman's flare that's ready to wear. Machine washable and dryable.

\$16 up

**Strieter's
Men's Wear**

"The Place To Go
For Brands You Know"

+ Services in Our Churches +

**ST. PAUL
UNITED CHURCH OF CHRIST**
The Rev. Warner Siebert, Pastor
Saturday, April 22—
No confirmation.
Sunday, April 23—
9:15 a.m.—Church school.
10:30 a.m.—Worship. Sermon
title: "Religion by Proxy." New
members received, coffee hour.
Wednesday, April 26—
1:00 p.m.—World Wide.
7:15 p.m.—High School Choir.
8:15 p.m.—Chancel.
Friday, April 28—
7:30 p.m.—Ann Arbor-Jackson
Association ordinal examination.

**ST. THOMAS
EVANGELICAL LUTHERAN**
Ellsworth and Haab Rds.
The Rev. Daniel L. Mattson,
Pastor
Saturday, April 22—
9:00 a.m.—Confirmation class.
Sunday, April 23—
10:00 a.m.—Worship service.
11:00 a.m.—Sunday school and
Bible class.
LWML rally.
Monday, April 24—
7:30 p.m.—Sunday school teach-
ers.
Tuesday, April 25—
10:00 a.m.—Ladies' Bible study
and workshop.
Thursday, April 27—
8:00 p.m.—Choir rehearsal.

**NORTH SHARON
COMMUNITY BIBLE CHURCH**
Sylvan and Washburn Rds.
The Rev. William Enslin, Pastor
Every Sunday—
10:00 a.m.—Sunday school.
11:00 a.m.—Worship service.
6:30 p.m.—Young People's serv-
ice.
Every Wednesday—
7:30 p.m.—Prayer meeting.

IMMANUEL BIBLE CHURCH
145 E. Summit St.
The Rev. LeRoy Johnson, Pastor
Every Sunday—
9:45 a.m.—Sunday school, nur-
sery provided.
11:00 a.m.—Morning worship,
nursery provided.
7:00 p.m.—Evening service.
Every Wednesday—
7:30 p.m.—Family hour, prayer
meeting and Bible study.
First Sunday of Month—
7:00 p.m.—Communion service.

**FIRST UNITED
METHODIST CHURCH**
The Rev. Clive Dickens, Pastor
Thursday, April 20—
9:00 a.m.—Elizabeth Circle at
the home of Mrs. Fred Mills.
There will be a baby-sitter at the
church.
Friday, April 21—
Worship/Workshop, Clarkston.
Sunday, April 23—
9:00 a.m.—Church school (4
years to adult).
10:00 a.m.—Worship service.
11:15 a.m.—Intermediate choir.
Wednesday, April 26—
6:30 p.m.—Primary choir.
4:00 p.m.—Junior choir.
8:00 p.m.—Youth and adult
choir.

**ST. JACOB EVANGELICAL
LUTHERAN CHURCH**
12501 Rietveld Rd., Grass Lake
The Rev. Andrew Bloom, Pastor
Every Sunday—
9:00 a.m.—Worship service.
10:15 a.m.—Divine services.
BAHA'I FIRESIDE
Every Thursday—
8:00 p.m.—At the home of
Toby Peterson, 705 S. Main St.
Anyone wishing to learn about
the Baha'i faith is welcome.

ZION LUTHERAN CHURCH
Corner of Fletcher, Waters Rds.
(Rogers Corners)
The Rev. John R. Morris, Pastor
Friday, April 21—
8:00 p.m.—Women challenge men
to evening of shuffleboard.
Saturday, April 22—
Youth instruction classes meet.
Conference L.L. dance at St. Paul,
Blissfield (evening).
Sunday, April 23—
9:00 a.m.—Sunday school.
10:15 a.m.—Worship (Women's
A.L.C. door offering).
Choir nite.
Tuesday, April 25—
10:00 a.m. to 2:30 p.m.—Huron
River Conference (A.L.C. spring
convention at Emmanuel, Ypsilanti.
Robert Miller, missionary, speak-
ing.

CONGREGATIONAL CHURCH
(United Church of Christ)
The Rev. Paul Gerhart, Pastor
Every Saturday—
6:30 a.m.—Men's Break-
fast.
Every Sunday—
9:00 a.m.—Senior High Sun-
day school.
9:45 a.m.—Sunday school.
10:00 a.m.—Morning worship.

ST. MARY CATHOLIC CHURCH
The Rev. Fr. Francis Wahowiak,
Pastor
Every Saturday—
7:30 p.m.—Mass.
Every Sunday—
6:30, 8:00, 10:00, 10:30 a.m.—
Mass.
METHODIST HOME CHAPEL
The Rev. R. L. Clemans, Chaplain
Every Sunday—
8:45 a.m.—Worship service.

**OUR SAVIOR
LUTHERAN CHURCH**
3515 S. Main St.
The Rev. William H. Keller, Pastor
Every Sunday—
9:00 a.m.—Sunday school.
10:30 a.m.—Worship service.
Every Tuesday—
8:45-5:15 p.m.—Confirmation I.
Every Thursday—
4:00 to 5:30 p.m.—Confirma-
tion II.
Every Saturday—
9:00 a.m.—11:00 a.m.—Confirma-
tion III.

GREGORY BAPTIST CHURCH
The Rev. Grant Lapham, Pastor
Every Sunday—
10:00 a.m.—Worship service.
11:15 a.m.—Church school.
6:30 p.m.—Baptist Youth Fel-
lowship.
7:30 p.m.—Evening worship
service.

**FIRST CHURCH OF CHRIST,
SCIENTIST**
1883 Washtenaw Ave., Ann Arbor
Sunday, April 23—
10:30 a.m.—Sunday school;
morning service. Lesson-sermon:
"Probation After Death."

**FIRST UNITED
PRESBYTERIAN CHURCH**
Unadilla
The Rev. T. H. Liang
Every Sunday—
9:45 a.m.—Sunday school.
11:00 a.m.—Worship service.
Every Tuesday—
8:00 p.m.—Choir practice.

**FIRST ASSEMBLY OF GOD
CHURCH**
The Rev. Thode B. Thodeson,
Pastor
Every Sunday—
9:45 a.m.—Sunday school.
11:00 a.m.—Worship service.
7:00 p.m.—Evangelistic service.
Every Wednesday—
7:00 p.m.—Midweek services.
Every Tuesday—
3:30-5:00 p.m.—Confirmation I.
Every Thursday—
4:00 to 5:30 p.m.—Confirma-
tion II.
Every Saturday—
9:00 a.m.—11:00 a.m.—Confirma-
tion III.

CHELSEA BAPTIST CHURCH
337 Wilkinson
The Rev. James Stacey, Pastor
Every Sunday—
9:45 a.m.—Sunday school.
11:00 a.m.—Worship service.
Nursery care available during all
services.
6:00 p.m.—Junior and Senior
Baptist Youth Fellowship.
7:00 p.m.—Evening service.
Every Wednesday—
7:00 p.m.—Bible study and
prayer meeting.

**BETHEL EVANGELICAL AND
REFORMED CHURCH**
(United Church of Christ)
Freedom Township
The Rev. Roman A. Reineck
Every Sunday—
10:00 a.m.—Worship.
10:00 a.m.—Sunday school.

**NORTH LAKE
UNITED METHODIST CHURCH**
The Rev. Harry Weeks, Pastor
Every Sunday—
9:30 a.m.—Worship service.
10:30 a.m.—Sunday school.
Every Tuesday—
7:00 p.m.—Choir rehearsal.

CHURCH OF CHRIST
38661 Old US-12, East
Lionel S. Burger, Minister
Every Sunday—
10:00 a.m.—Church school.
11:00 a.m.—Worship service.
babysitter will be at the church.
6:00 p.m.—Worship service.
Every Wednesday—
7:30 p.m.—Bible Study.

**SALEM GROVE
UNITED METHODIST CHURCH**
The Rev. Harry Weeks, Pastor
Every Saturday—
2:30 p.m.—Choir rehearsal.
Every Sunday—
10:00 a.m.—Sunday school.
11:00 a.m.—Worship service.

**ST. JOHN'S EVANGELICAL
AND REFORMED CHURCH**
(United Church of Christ)
Rogers Corners
The Rev. David J. Kleis, Pastor
Every Sunday—
9:30 a.m.—Sunday school.
10:30 a.m.—Morning worship.

**WATERLOO
FIRST UNITED METHODIST**
Parks and Territorial Rds.
Mrs. Altha Barnes, Pastor
Every Sunday—
9:15 a.m.—Morning worship.
10:30 a.m.—Sunday school.
First and Third Saturdays—
7:00 p.m.—Youth Fellowship at
Village church Sunday school
house.

**ST. JOHN'S EVANGELICAL
AND REFORMED CHURCH**
(United Church of Christ)
Francisco
The Rev. Robert Townley, Pastor
Every Sunday—
10:00 a.m.—Worship service.
10:20 a.m.—Sunday school.

For And About Teenagers



THIS WEEK'S LETTER:
I'm going with this boy, and that's my problem! I really like him, but his sister and her friend are trying to break us up. I'm afraid they'll try to get him to go out with his sister's friend. But that's not all they're doing. Everywhere we go in school there are five or six of his sister's friends following right behind us every step of the way, and they hear every word said. We're getting tired of this. Can you help?

OUR REPLY: Your boyfriend's sister seems like she is going to an awful lot of trouble to break you two up. Your boyfriend must know something strange is going on, after all, five or six people following a couple just doesn't seem right. Discuss this problem with him and tell him what you think is the reason. See what he says. Then, observe his sister and her friends for a few days to make sure you are correct. If he really likes you, he'll want an end to his sister's immature meddling. Once he levels with his sister, and tells her to keep out of his personal affairs, hopefully, she'll get the message.

If you have a teen-age problem you want to have discussed or an observation to make, address your letter to "For and About Teen-Agers," Community and Suburban Press Service, in care of this news paper.

ROCKING M RANCH

Morgans & Arabians
STUD SERVICE
STOCK FOR SALE
Phone 426-8110
8060 N. Territorial
Dexter, Mich.

New GE Elec-Trak Tractor goes easy on you



Easy to start. Turn the key and it's on, like a light!

Easy on the nerves. No noisy engine, runs on silent electric current.

Easy to run. The whole family can, (and does) mow lawns, throw snow, plow ground, etc. As safe as technology can make it. Mow up to three acres without re-charging. "refuel" by plugging into any standard outlet.

Easy to maintain. No plugs, no points, no grease jobs, no oil changes. Just batteries and a simple electric motor.

Easy to buy. We have a complete line and convenient terms. Come in for a free demonstration.

Free mower at participating dealers with any GE Elec-Trak Tractor during our special Spring Introductory Sale.

From \$795.

Manufacturer's suggested retail price for EBM plus taxes, set-up, freight charges if any.

Consult dealer(s) listed below for their actual prices and terms in effect.

GENERAL ELECTRIC

L. V. KIRK

ELECTRICAL CONTRACTOR
Electrical Contracting - Major Appliance Repair
DIAL GA 8-3701
MANCHESTER, MICH.

NEW FROM AAFS LOT MORTGAGES

It's FABULOUS. Now you can buy your dream site with an Ann Arbor Federal Savings **LOT MORTGAGE**. Your developed building site must be located within a city or village limits or within a platted subdivision. A **LOT MORTGAGE** provides a new means for individuals to purchase a developed lot for future construction of their permanent home. Terms and arrangements are most liberal. See a mortgage specialist at any Ann Arbor Federal Savings office and arrange a safe, sound AAFS **LOT MORTGAGE** to buy the developed lot of your choice.

**ANN ARBOR
FEDERAL SAVINGS**
the savings and loan specialists



Ann Arbor Offices: Liberty at Division, West Stadium at Pauline, Huron Parkway at Platt, Plymouth at Nixon. Chelsea Office: Main Street near Old U.S. 12
Member: Federal Home Loan Bank System & Federal Savings and Loan Insurance Corporation



BOWLING NEWS



SPORTS CORNER

Chelsea Lanes Mixed

Standings as of April 14

	W	L
Centerless Grinders	128	82
Marshall & Eder	122	88
Morgan & Turner	119	91
Helm & Arrington	115	95
Chelsea Lanes	107	103
Barkley & Gephart	106	104
Ritzsimmons Excavate	102	108
The Pub	100	110
Meabons	99	111
Sables Collision	96	114
Bollinger Sanitation	83	127
Jarvis & Goltz	83	127

Women, 150 games: A. Turner, 182; F. Gephart, 169; K. Arrington, 177; K. Gephart, 167; L. Gilmore, 166, 158; D. Eder, 163; H. Morgan, 158, 161; D. Keezer, 154.

Women, 450 series: H. Morgan, 463; A. Turner, 461.

Men, 175 games: P. Barkley, 229; T. Marshall, 225, 177; R. Huston, 222, 189; D. Eder, 216, 201; E. Greenleaf, 215, 179; D. Alexander, 204, 197; L. Gephart, 190, 187; E. Sable, 190, 188; R. Morgan, 187, 178; L. Keezer, 180; R. Bauer, 180; J. Turner, 177; W. Steinaway, 176; D. Longworth, 171.

Men, 475 series: D. Eder, 587; R. Huston, 571; E. Greenleaf, 561; D. Alexander, 560; T. Marshall, 547; L. Gephart, 549; P. Barkley, 512; E. Sable, 510; R. Morgan, 491; R. Bauer, 486.

Rolling Pin League

Final Standings

	W	L
Grinders	82	50
Moppper Uppers	70 1/2	52 1/2
Mixers	73 1/2	58 1/2
Egg Beaters	78	69
Kookie Cutters	69 1/2	62 1/2
Spooners	65	67
Coffee Caps	65	67
Dish Rags	60	72
Jolly Mops	60	72
Pots	58 1/2	73 1/2
Kitchen Kapers	53	79
Brooms	53	79

400 and over series: J. Rabbitt, 461; G. Brier, 422; E. Reynolds, 437; A. Schneider, 436; G. Weiner, 428; J. Lewis, 462; G. Klink, 423; P. Harook, 463; L. Keezer, 434; D. Keezer, 459; C. Shepherd, 446; P. Foster, 436; J. Shepherd, 414; P. Edick, 439; E. Williams, 450; P. Borders, 437; S. Parker, 447; D. Dirlam, 430; K. Del Prete, 467; W. Waldoeker, 436; L. Orlovski, 421; D. Butler, 419.

140 and over games: J. Rabbitt, 151, 182; G. Brier, 174; E. Reynolds, 163; A. Schneider, 180, 171; G. Weiner, 164, 148; J. Lewis, 147, 156, 158; G. Klink, 166; E. Slater, 152; D. Butler, 157, 161; A. Foster, 140; L. Orlovski, 150, 157; P. Patterson, 187; W. Waldoeker, 160, 151; E. Cook, 149; R. Bable, 143; G. Greenleaf, 141, 154; J. Edick, 156; 151; E. Williams, 188; P. Borders, 140, 163; S. Parker, 184, 145, 141; D. Dirlam, 172, 166; K. Del Prete, 162, 186; C. Shepherd, 152, 156; J. Pax, 144; R. Foster, 171; J. Shepherd, 178, 147, 189; P. Harook, 156, 189; L. Keezer, 164; D. Keezer, 150, 164, 189.

Junior House League

Standings as of April 13

	W	L
The Pub	147	77
Jiffy Mix	124	100
J & S Tool	123	101
Bob's Beaters	122	102
N. Amer. Rockwell	120	104
Wolverine No. 1	117	107
S.D. Sales & Service	115	115
Smith's AAA Service	106 1/2	117 1/2
Chelsea Lanes	105 1/2	118 1/2
Boyer Automotive	98 1/2	125 1/2
Gambles	89	135
Wolverine No. 2	82 1/2	142 1/2

200 games: J. Hughes, 202; E. Buku, 211; A. Fletcher, 205; C. Koenigster, 211; P. Barkley, 213; J. Wahl, 206; R. Worden, 208; A. Peterson, 206, 208, 200; J. Toma, 237; J. Ledwidge, 200; S. Policht, 209; P. Boham, 221; N. Fahrner, 204; J. Harrook, 218; L. Fahrner, 221, 214.

600 series: A. Peterson, 612; J. Toma, 603; P. Boham, 601; L. Fahrner, 618.

500 series: J. Hughes, 540; L. Hughes, 528; D. Buku, 521; E. Buku, 525; J. Porter, 536; A. Fletcher, 560; N. Packard, 513; G. White, 507; W. Beeman, 542; C. Koenigster, 597; T. Marsh, 521; F. Barkley, 509; F. Hoffman, 508; J. Wahl, 521; L. Bauer, 523; R. Kye, 530; R. Worden, 502; D. Eder, 547; T. Wisniewski, J. Ledwidge, 515; S. Policht, 534; J. Myrning, 550; K. Larson, 542; N. Fahrner, 539; L. Salyer, 556; J. Harrook, 572; B. Ringe, 523.

Tri-City Mixed League

Standings as of April 14

	W	L
Foor Mobil	78	46
3-D Sales & Service	70 1/2	53 1/2
Chelsea Cleaners	69 1/2	54 1/2
Jiffy Mixes	67 1/2	56 1/2
Wolverine Tail & Small	66 1/2	57 1/2
Trail Blazers	66 1/2	57 1/2
Jiffy Market	66	58
Smith's Service	66	58
4-W's	67	57
Stivers	62	72
Sprague Buick & Olds	62	72
Heydauff's Appliance	48 1/2	75 1/2

500 series, men: C. Debbing, 516; R. Pike, 547; H. Kunzelman, 500; A. Sannes, 548; D. Scott, 510; C. Staphish, 540; T. Wisniewski, 559.

200 games, men: R. Pike, 205; T. Wisniewski, 208.

450 series, women: D. Watkins, 471.

150 games, women: U. Allen, 161; M. Ashmore, 157; G. Debbing, 167; D. Eder, 153; B. Pike, 155; B. Kunzelman, 167; B. Parish, 162; D. Sannes, 160; D. Watkins, 148, 165, 158; B. Wisniewski, 154.

Chelsea Suburban

Standings as of April 12

	W	L
Dairy Queen Brazier	89 1/2	58 1/2
Patty Ann	82	46
Dana	74 1/2	53 1/2
Foor Mobil	72 1/2	55 1/2
Chelsea Lanes	67 1/2	60 1/2
Prisinger Realty	66 1/2	61 1/2
Pittsfield Plastics	62 1/2	65 1/2
State Farm	54 1/2	73 1/2
Dander's	52	78
Artex Roll-Ons	48 1/2	77 1/2
Waterloo Garage	48	80
Chelsea State Bank	48	80

450 games and over: M. Rush, 156; B. Dittmar, 187; K. Snyder, 154; E. Yocum, 157; V. Harvey, 158; A. Hocking, 189; S. Moore, 167, 101, 172; N. Collins, 187, 156; B. Hatley, 162, 163, 166; M. Neal, 202; R. McGibney, 165, 162, 169; D. DeLaTorre, 171; G. Wilkerson, 150; D. Sannes, 178; J. Stoll, 165; S. Bowen, 150, 170; A. Bohne, 163; B. Beeman, 187; E. Whitaker, 169; P. Harook, 177; D. Kinsey, 202; N. Keezer, 154, 197; K. Chapman, 153; B. Robeson, 153; N. Prater, 161 163; M. Paul, 177; N. Packard, 198, 180; A. Coppennoll, 153, 169; J. Buiku, 154; P. Walz, 155; E. Schulz, 158.

425 series and over: B. Dittmar, 426; K. Snyder, 431; A. Hocking, 426; S. Moore, 500; N. Collins, 428; B. Hatley, 431; M. Neal, 471; R. McGibney, 456; D. Sannes, 430; S. Bowen, 445; A. Bohne, 429; P. Harook, 465; D. Kinsey, 491; N. Keezer, 437; K. Chapman, 437; G. DeSmith, 428; N. Prater, 443; M. Paul, 444; N. Packard, 516; J. Buiku, 448; A. Coppennoll, 457; P. Walz, 436.

Chelsea Women's Bowling Club

Standings as of April 12

	W	L
Parish's Cleaners	82	36
Chelsea Milling	80 1/2	47 1/2
Jiffy Mixes	77 1/2	50 1/2
Washtenaw Engr. Co.	77 1/2	50 1/2
Wolverine Bar	71	57
Chelsea Lanes	70 1/2	57 1/2
Jiffy Market	62	66
Community Serv. Press	57	71
Schumm's	49	79
Schneider's Grocery	48	80
Norris Electric	46	82
N. American Rockwell	37	91

450 series and over: D. Alber, 505; P. Shoemaker, 493; R. Hummel, 495; B. Fritz, 495; D. Verwey, 494; S. Klink, 488; H. Ringe, 479; J. Rowe, 478; G. Kuhl, 471; S. Ringe, 464; D. Eisenman, 456.

150 games and over: D. Alber, 170, 170, 165; P. Shoemaker, 164, 186; R. Hummel, 176, 170; B. Fritz, 150, 200; D. Verwey, 214; S. Klink, 151, 163, 174; H. Ringe, 171, 167, 161; J. Rowe, 201; C. Kuhl, 186, 161; S. Ringe, 192, 150; D. Eisenman, 167, 154; L. Orlovski, 167; N. Popovich, 162; D. Fouty, 167; J. Norris, 164; L. Alexander, 184; H. Morgan, 156, 154; M. E. Sutter, 158; P. Wurster, 159, 174; B. Weeks, 165; L. Bradbury, 175; A. Fahrner, 163, 150; B. Parish, 165, 162; J. Hafner, 171.

Guys and Gals Mixed League

Standings as of April 13

	W	L
Pub No. 2	79	41
Pub No. 1	68	52
Seitz's Tavern	64	56
Pleasant Lake Resort	63	57
Chelsea Lanes	62	58
Grass Lake	62	58
Norris Electric	59	61
The Odd Couples	57	63
Team No. 1	56	64
Hay Haulers	51	69
Chelsea Standard	50	70
Lanewood	49	71

Team high game: Hay Haulers, 820.

Team high series: Hay Haulers, 2,379.

Women, high game: N. Collins, 186.

Women, high series: N. Collins, 532.

Men, high game: R. Muck, 224.

Men, high series: R. Muck, 543.

Women, 450 or over games: J. Schmude, 162; V. Cooper, 152; L. Sanderson, 159; N. Collins, 171, 175, 186; J. Norris, 173; P. Elliott, 165, 181; S. Steele, 169; P. Wirth, 154.

Women, 450 or over series: P. Elliott, 488; N. Collins, 532.

Men, 175 or over games: R. Schmude, 178; P. Cooper, 209; D. Pierce, 178; J. Eder, 180; J. Collins, 182, 176; B. Mock, 224; O. Timmerman, 184, 198; R. Huston, 177, 185, 181; J. Elliott, 202; T. Steele, 217.

Men, 600 or over series: R. Huston, 543; U. Elliott, 535; O. Timmerman, 530; J. Collins, 537.

RESTAURANT BEEF

Next time you order beef in a restaurant, you'll know that you're in good company. Of all food items available, beef is number one in restaurants according to a recent USDA study of the foodservice industry. In fact, about 98 percent of all beef produced in the United States is sold through foodservice outlets.

BOWL for the fun of it...

Having Fun Lately?
Bowling Is a Ball!

Put some fun in your life... Bowl for laughter and health at our modern, well-equipped lanes with rarely a wait. Bring the gang down!

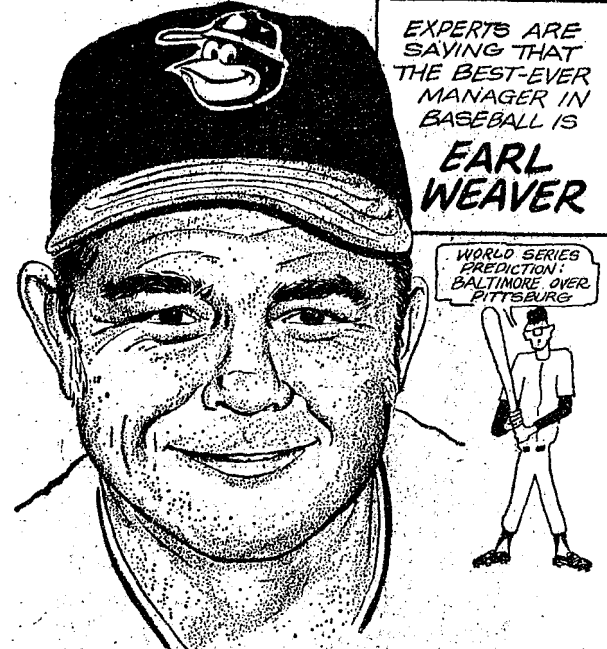
CHELSEA LANES
1180 M-52 Phone GR 5-8141

YES
WE ARE MAKING
LONG-TERM FARM
REAL ESTATE
LOANS

SEE US

Federal Land Bank
Association

P. O. Box 1006
Ph. 769-2411 8645 Jackson Rd.
Ann Arbor, Mich. 48108



EXPERTS ARE SAYING THAT THE BEST EVER MANAGER IN BASEBALL IS EARL WEAVER

WORLD SERIES PREDICTION: BALTIMORE OVER PITTSBURGH

-AND THAT HIS CURRENT BALTIMORE ORIOLE TEAM IS IN A CLASS ALL BY ITSELF, SURE TO DOMINATE THE AMERICAN LEAGUE.

Charlie Brown & Snoopy's Friends Prep Division

Standings as of April 15

	W	L
Good Guys	69 1/2	20 1/2
Rifighters	54	36
Strikers	53	34
Bearcats	52	38
Fantastic 5	45	42
Pros	41 1/2	48 1/2
Mustangs	33	57
Bulldogs	26	64

Games over 100: D. Aldrich, 144; M. Bowen, 117; C. Sannes, 131, 122; D. Craft, 100, 151; B. Lewis, 144, 137; C. Collins, 101; D. Packard, 150, 103; J. Sweet, 100, 106; C. Umstead, 109, 120; R. Stoddard, 110; T. Marsh, 108, 122; A. Umstead, 133; D. Alexander, 117; A. Kallish, 121, 115; B. Lovely, 121, 125; D. Thompson, 154; G. Packard, 113; J. Alexander, 113; L. Hafner, 129, 111; M. Schmitt, 113, 115; R. Anabel, 113; S. Stoddard, 108; A. Houle, 130; J. Boyer, 152, 153; J. Adams, 109; M. Foster, 151, 141; B. McGibney, 116.

Series over 200: D. Aldrich, 213; M. Bowen, 213; C. Sannes, 238; D. Craft, 251; B. Lewis, 231; C. Colins, 200; D. Packard, 253; J. Sweet, 206; C. Umstead, 229; R. Stoddard, 208; T. Marsh, 230; A.

Charlie Brown and Snoopy's Friends Peanut League

Standings as of April 15

	W	L
Pin Crackers	64	23
Snoopy Stars	43 1/2	63 1/2
Harlem Globetrotters	48	39
French Fries	47	40
Super Stars	40	46
Strikers	41	46
Meat Balls	40 1/2	46 1/2
Flintstones	37	60

Games over 70: J. Krichbaum, 94, 83; D. Bowen, 91, 107; D. Alber, 111, 100; D. Seyfried, 80, 93; D. Eisele, 83, 115; M. Steina-way, 84, 107; B. Freeman, 84, 108; R. Schulze, 86, 92; G. Egeler, 80, 91; D. McGill, 108, 159; D. Thompson, 74; D. Marsh, 78, 70; J. Atkinson, 81, 62; T. Greenleaf, 84, 88; M. Umstead, 71; M. A. Petsch, 91, 79; P. Hoffman, 80, 74; T. Miller, 74, 62; R. Klink, 74; J. Stock, 89, 78; C. Ford, 70; M. Alexander, 88; C. Fahrner, 70; T.

Schulze, 73; C. Umstead, 78, 85; R. Ostrander, 78.

Series over 100: M. Alexander, 146; C. Fahrner, 130; T. Schulze, 131; C. Umstead, 130; R. Ostrander, 130; J. Boyer, 131; C. Kallish, 106; M. Umstead, 105; M. A. Petsch, 170; P. Hoffman, 154; T. Miller, 166; R. Klink, 143; J. Stock, 165; C. Ford, 135; B. Freeman, 192; R. Schulze, 178; G. Egeler, 171; D. McGill, 207; D. Thompson, 129; D. Marsh, 143; J. Atkinson, 148; J. Atkinson, 143; T. Greenleaf, 182; J. Krichbaum, 177; D. Bowen, 138; D. Alber, 211; D. Seyfried, 178; D. Eisele, 198; M. Steinaway, 191.

Hi Point Mixed League

Standings as of April 11

	W	L
Alley Katz	673	515
Dreadnaughts	672	516
Station WVPP	631	557
Easy Riders	604	584
Four Squares	593	589
Question Marks	593	589
River Rats	588	601
Holy Terrors	580	608
Ding-A-Lings	577	611
Knock Outs	547	641
Hi Steppers	544	644
Flat Tires	520	668

Men series over 450: H. Schultz, 470; D. Crum, 494; D. Carpenter, 482; M. Purdy, 519; K. Lofquist, 494; O. Inbody, 544.

Men series over 450: H. Schultz, 174; D. Crum, 179; D. Carpenter, 173, 165; K. Lofquist, 206; M. Purdy, 183, 198; O. Inbody, 171, 198, 175; H. Martin, 168; L. Kessler, 167.

Women series over 425: B. Barth, 429; C. Teachworth, 440; S. Walton, 437; K. Schultz, 445; P. Harook, 451; G. DeSmith, 463.

Women games over 150: G. DeSmith, 156, 189; P. Harook, 156, 166; K. Schultz, 179; S. Walton, 176; C. Teachworth, 163; B. Barth, 163; C. Klapperich, 172; L. White, 156.

Nite Owl League

Standings as of April 15

	W	L
Gambles	79	49
Steele's Heating	76 1/2	51 1/2
Foster's Men's Wear	76	52
Cavanaugh Lake Store	75 1/2	52 1/2
Pump & Pantry	69 1/2	58 1/2
Smith's AAA	63	65
Heller Electric	67 1/2	70 1/2
Chelsea Finance	57	71
McCalla Mobile Feeds	57	71
Ted's Standard	56	72
Arco Sparks	54	74
Jack & Son Barbers	47	81

500 series: G. Rouse, 567; E. Buku, 532; P. Kinsey, 529; G. Packard, 528; R. Woods, 527; W. Smith, 526; W. Schulz, 519; C. Staphish, 518; T. Schulze, 515; W. Maier, 515; R. Nix, 511; T. Stepp, 503; D. Loveland, 502.

200 games: D. Loveland, 254; R. Woods, 228; R. Green, 212; T. Schulze, 211; T. Stepp, 210; G. Rouse, 205; R. Nix, 200.

500 Series

Standings as of April 15

	W	L
Gambles	79	49
Steele's Heating	76 1/2	51 1/2
Foster's Men's Wear	76	52
Cavanaugh Lake Store	75 1/2	52 1/2
Pump & Pantry	69 1/2	58 1/2
Smith's AAA	63	65
Heller Electric	67 1/2	70 1/2
Chelsea Finance	57	71
McCalla Mobile Feeds	57	71
Ted's Standard	56	72
Arco Sparks	54	74
Jack & Son Barbers	47	81

500 series: G. Rouse, 567; E. Buku, 532; P. Kinsey, 529; G. Packard, 528; R. Woods, 527; W. Smith, 526; W. Schulz, 519; C. Staphish, 518; T. Schulze, 515; W. Maier, 515; R. Nix, 511; T. Stepp, 503; D. Loveland, 502.

200 games: D. Loveland, 254; R. Woods, 228; R. Green, 212; T. Schulze, 211; T. Stepp, 210; G. Rouse, 205; R. Nix, 200.

200 Games

Standings as of April 15

Heller Electric	57½	70½
Chelsea Finance	57	71
McCalla Mobile Feeds	57	71
Ted's Standard	56	72
Airco Sparks	54	74
Jack & Son Barbers	47	81
500 series: G. Rouse, 567; E. Bu-		
ku, 532; P. Kinsey, 529; G. Pack-		



Mrs. Jon Timothy Ehnis

Judith Ann Patrick, Jon T. Ehnis Speak Vows in Friday Ceremony

St. Mary Catholic church provided the setting Friday, April 14 for the marriage of Judith Ann Patrick and Jon Timothy Ehnis. The bride is the daughter of Mr. and Mrs. Russell Patrick of 204 Park St. Jon is the son of Mr. and Mrs. Al Ehnis of 400 Snyder St., Ann Arbor. The Rev. Fr. Francis Wihlowak officiated at the 7:30 p.m. ceremony.

The bride chose a white full-length gown in nylon sheer with an A-line skirt. The sheer illusion yoke was scattered with lace flowers and accented with pearls. A full, chapel-length train flowed behind the bride who also wore a floor-length nylon sheer veil trimmed in lace. The head piece was open crown with lace blossoms and beaded pearls.

Serving as matron of honor was Mrs. Glenda Geist of Ypsilanti. She wore an orchid and purple empire waisted gown trimmed with purple lace. The skirt and sleeves were orchid chiffon while the veil and headpiece were purple.

Attending the bride were Jan Ehnis, a sister of the bridegroom, and friends of the bride, Vickie Wilkerson and Peggy Deaton, both of Chelsea. They were dressed alike in orchid and purple empire waisted gowns trimmed in purple lace. Their headpieces and veils were orchid.

The bride's mother wore a mint green empire waisted, floor-length gown made of crepe. The mother of the bridegroom wore a light pink print floor-length gown, also with an empire waist.

Also attending in the ceremony were Kenny Patrick, brother of the bride, acting as ringbearer, and Lori Patrick, a cousin, as flower girl.

The best man was Jim Ehnis, a brother of the bridegroom. Seating guests for the service were Larry Patrick, a brother of the bride, and friends of the bridegroom, Dominic Palumbo and Mike Rogers.

Following the wedding a reception was held at the Chelsea Rod & Gun Club where 125 guests were served. Nancy Patrick cut the cake and Joan Slane was in charge of the guest book.

The couple traveled to Florida before returning to reside at 436 McKinley St.

The new Mrs. Ehnis is a 1963 graduate of Chelsea High school. She attended Preston Beauty Academy in 1964 and now owns and operates the Style Shop in Chelsea.

Mr. Ehnis is a 1964 graduate of Pioneer High school in Ann Arbor. He was drafted into the army in 1965 and since 1968 has been employed at the Ann Arbor post office.



TROOP 58—

April 29 will be a community cleanup for Chelsea Girl Scouts. There also will be a picnic lunch. It is going to start at 10 a.m. and end at 12:30 p.m. They will meet at North school. All girls will bring a nose bag lunch. Then we broke into patrols.

Jim Van Slambrouck, scribe.

TROOP 169—

Brownie Troop 169 made some more puppets. Each Brownie sewed a face on a puppet. Next week we will visit our sister troop at the Methodist church. The third graders are learning the Girl Scout laws. Treats were furnished by Sara Merkel.

Cathy Wade, scribe.

TROOP 689—

The Juniors patrol started the meeting with the flag ceremony. Teresa Hoffman and Valisa Pfelecher received their collectors badge. Mr. Haywood from the Red Cross came and talked to us about first aid. Jeryl Herrick brought treats. We will be delivering our Girl Scout cookies.

Jeryl Herrick, scribe.

For an easy and economical dinner serve beefy kabobs. Simply shape seasoned ground beef into balls approximately 1 1/2 inches in diameter. Thread the skewers alternately with beef balls, tomato wedges and green pepper squares. Broil them 3 inches from the heat for 12 to 15 minutes, depending on the degree of doneness desired, turning and brushing occasionally.

We have discussed our Solar



NORTH ELEMENTARY SCHOOL NOTES

4th GRADE—

Teacher: Mrs. Hafer
Reporters: Doug Houk, Kirk Myers and John Thornbury

On March 23, we went on a field trip to the Institute of Art in Detroit. We saw masks and carvings from Africa. We also saw suits of armor from Europe. One of the most interesting things was the mummy cases from Egypt. About the last thing we saw was a huge room filled with furniture, dishes, etc., from the Dodge mansion. We saw many, many paintings in the museum. When we came back, we each wrote a paragraph and drew picture of what we liked most.

In social studies, we have finished studying Switzerland, and now we are studying the Netherlands. We have formed six committees and we are writing a book on Holland. We have a boy in our room whose parents are from Holland, Henri van der Waard. Henri is giving us lots of information. We all enjoyed our Easter vacation. Scott Robertson and Chris Check went to Florida. Kurt Walworth went to Kentucky. Marsha Liebeck has a birthday this month.

Teacher: Mrs. Paplawsky
Reporters: Mary Kalmbach, Sandy Welshans and Kim Wood

On the 23rd of March, some of the 4th grades went on a field trip to a museum. At the museum, we saw mummy cases, Mr. and Mrs. Dodge's furniture, new art and old pictures. Some people brought money to buy things. Mary Kalmbach bought a necklace of beads. Kim Wood bought an owl made of clay. When we were finished buying, we went to the bus. On the way, there was a man selling balloons and peanuts. We walked right by him and boy, was he mad. After that we went on the bus and ate. On the way home we sang. Mary Kalmbach's mother brought a meteorite that had fallen on her grandfather's farm. It hit a tree and broke the tree and itself. Mrs. Kalmbach brought the biggest piece to show us.

We had our ceramics fired the second time and took them home for Easter.

5th GRADE—

Teacher: Mrs. Mortensen
We are reviewing multiplication and division and are doing much better the second time around. In English we are studying different sentence types. For creative writing we made up a product and made an advertisement on it. Our ecology poster winners were Mark Diekins, who won 1st place, and Darlene Payne, 2nd place. There were many excellent posters. The winners received a Coke bottle glass.

We have discussed our Solar

system and Newton's Laws in Science.

For Easter we decorated Leggo's eggs and had many creative pieces when we were finished.

We have two new students in our room, which gives us a total of 23. They are: Kenny Miller from Ohio and Lori Van Riper from Ann Arbor.

Teacher: Mrs. Winkle
We are back in school after spring vacation and working very hard to learn the skills regarding addition of mixed numbers, then making sure they end up in simplest forms. We are also learning the skill of regrouping in the subtracting of fractions.

We are really working hard now as we are down to the last quarter of the "game" of getting through the 5th grade.

The weather has been beautiful this week as we have enjoyed the out of doors, especially playing softball. This is the baseball season, so softball, in the elementary schools, is the present sport on the playground. This is the spring fever season, so the children are too busy to do our news.

3rd GRADE—

Teacher: Mrs. Peet
Reporters: Paula Haist, Margaret Stirling and Whitney Jones
We made booklets on planets. We have done multiplication in math and division. In our class our flowers are blooming.

We have been learning how the words "fortunately" and "unfortunately" are different. We learned this morning, April 13 that word it will change the whole meaning of the word.

Here are some stories that are both fortunate and unfortunate:

Fortunately, one day a man invented a robot that went to Sunday school. Unfortunately, it ate a Willy Wonka bar all through the ceremony. Fortunately the candy bar melted in his mouth. Unfortunately he lost a screw on the way home. Fortunately he lost a few parts before he got home. Unfortunately he still made it home.

—Kirk and Sharon.

Fortunately, Bob got a balloon. Unfortunately some boys popped it. Fortunately he had two balloons. Unfortunately the other balloon went out of his hand. Fortunately his friend gave him another balloon. Unfortunately it had a hole in it. Fortunately it was his birthday and he got all the balloons he wanted. —Ross.

Fortunately, school was out and Jan was walking home. Unfortunately it started to rain. Fortunately, she happened to have her umbrella with her. Unfortunately, it was windy out and her umbrella turned inside out. Fortunately, she spied a taxi. Unfortunately, she didn't have any money. Fortunately he was a friendly guy and didn't make her pay. Unfortunately, the house door was locked. Fortunately she was skinny enough to fit through the window. Unfortunately, it was locked too. Fortunately, she found a crowbar. Unfortunately, the window was acrylic. Fortunately her mother came home. The end.—Matthew and Chris P.

Fortunately a girl came by. Unfortunately she kissed us. Fortunately she ran away. Unfortunately five more girls came by. Fortunately they didn't kiss us. Unfortunately we had to go home. Fortunately they were riding our bus. Unfortunately they sat with us. Fortunately we got off the bus. —Andy and Larry.

Once there were two children



Week of April 24-28

Monday, April 24—Savory beef over whipped potatoes, buttered peas, biscuits, butter, peach dessert, milk.

Tuesday, April 25—No lunch, school out at 11:30. In-service day for teachers.

Wednesday, April 26—Ham salad sandwiches, tossed salad, potato chips, pickle slices, cherry dessert, milk.

Thursday, April 27—Cook's choice.

Friday, April 28—Fishburgers, hamburger buns, sauce mixed vegetables, shoe-string potatoes, apple dessert, milk.

that went on a hike. Unfortunately they fell in a pit. Fortunately they got out. Unfortunately they came to a house. The house was haunted. Fortunately there was no one home. Unfortunately they ran into a ghost. Fortunately he went away. Unfortunately they met a skunk. Fortunately he was not scared. Fortunately he ran away. Unfortunately they couldn't find their way out. Fortunately they met a ghost and asked him the way. Unfortunately, all he could say was boooooo. Fortunately they turned on the light. Unfortunately the chandelier started to move. Fortunately they found their way home.—Margaret and Paula.

Raylene Buckingham, G. Luckhardt Wed Saturday at St. Mary Church

St. Mary Catholic church provided the setting Saturday, April 8 for the marriage of Raylene Ann Buckingham and Gary Luckhardt. The bride is the daughter of Mr. and Mrs. Raymond Buckingham of 700 N. Main St. The bridegroom is the son of Mr. and Mrs. Andrew Luckhardt of Luckhardt Rd., Manchester. Officiating at the early afternoon service was the Rev. Fr. Francis Wihlowak.

The bride chose a white, empire waisted gown, with train, trimmed in front with white velvet ribbon. The long sleeves were tightly fitted to the elbow and then puffed to the wrist. She wore a shoulder length, white veil and carried a bouquet of yellow rosebuds and daisies.

Serving as maid of honor was Miss Nola Wackenhut of 11730 Waters Rd., Chelsea. She wore an empire waisted gown of lavender dotted swiss with matching lavender velvet trim on the waist and collar. The dress had short puff sleeves and a velvet bow in back. She wore a short lavender veil and carried three lavender tipped carnations.

The three bridesmaids for the occasion, Mrs. Carolyn Bollinger of Manchester and Mrs. Nancy Cuthbert of Indiana, sisters of the bride, and Miss Trudy Sanderson of Chelsea, were dressed exactly as the maid of honor.

The bride's mother wore a simple rose colored knit dress while the bridegroom's mother wore a light pink knit and carried white accessories.

Joe Kidd of Manchester acted as best man while Ron Bollinger and the bridegroom's brothers, Russell and Wayne, seated guests for the service.

A reception at the Freedom Town Hall, Pleasant Lake Rd., followed the ceremony. Mrs. Lola Madhuk and Miss Kathy Murray, both of Chelsea, assisted in the preparation and serving of the food.

The couple has returned to live in Manchester after a brief trip to the Smokey Mountains in North Carolina. Mr. Luckhardt is employed by Midwest Microwaves Inc., in Ann Arbor, while his new wife works for Xerox, also in Ann Arbor.



DEN 1, PACK 415—

Den 1, pack 415 met, Thursday, April 13 at the home of their den mother, Mrs. Alice Abbingdon. The meeting opened with the Cub Scout Promise. Herbert Pearson was the only absentee. Parts were chosen for a skit to be presented at the April pack meeting. Refreshments were served by the den mother. Billy Freeman, scribe.

DEN 13, PACK 435—

This week we started putting noodles on our cardboard Wolf and Bear heads. It was fun and some of the kids were eating the noodles. Mrs. Thornbury was our den helper. The treats were provided by John Thornbury and his mother. Danny Alber, scribe.

UNREAL?

Robots in hard hats and traffic vests wave flags on New Jersey highway projects.

Club and Social Activities

OLDER ADULT GROUP

Older Adult group of the United Methodist church met Saturday, April 15 at the Methodist Home for birthday celebrations and a pot-luck dinner. Forty members and guests were present to toast Florence Ives, Bertha Reimannschneider, Mrs. Alfred Holzer, and Lionel Vickers on their birthdays with a cake baked by Mrs. Lyman Adams. The group also viewed pictures shown by Mr. and Mrs. Bolanowski of their recent trip to Hawaii. The committee of Mrs. Adams and Mrs. Ray Lillie announced that the next meeting will be May 20 in the social center of the Methodist church. The featured speakers for the evening will be the Rev. and Mrs. George Spiller.

LYNDON FARM BUREAU

Lyndon Farm Bureau discussion group held its monthly meeting in the Town Hall April 8. Nine members attended the meeting and pot-luck supper.

Chairman William Hogan opened the meeting with the Farm Bureau creed and launched a lively discussion concerning property tax relief and township rezoning.

The group also welcomed Emory Pickells back to Chelsea, from Florida and Malcolm Reinhardt who has been recovering from his serious snowmobile accident during the Christmas season.

The next meeting is scheduled for May 13, with the pot-luck supper at 7 p.m.

CAMERA CLUB

Chelsea Camera Club held their monthly meeting at Sylvan Township Hall, Tuesday evening. Eighteen members were present.

Plans were made for May meeting and June pot-luck meeting.

The program "Scenic U.S.A." was presented by Reid Engelbrecht. Starting at Dearborn, the Engelbrechts traveled by bus with the Dearborn Recreation Group to the West Coast. On the way the group visited Yellowstone Park, Teton National Park and points of interest in Arizona, among them the Painted Desert and Petrified Forest and San Francisco. A treat to the group was a vocal rendition of Home on the Range by Mr. Engelbrecht as he showed slides of the range complete with the buffalo.

Beef skirt steaks are made from the "skirt" which is the inner diaphragm muscle of the beef animal. This muscle is rolled up and cut in slices — to 1 inch thick to form pinwheels 3 to 4 inches in diameter. Steaks are skewered or tied. They are prepared by braising or by broiling.

A new dairy snack food, with a flavor similar to a combination of mild cheese and butter that can be made as a spread or as dip, has been developed.

VIVIANE WOODARD COSMETICS

475-8785

Dorothy Orbring, Director



Make Something of this!

Franklin Modular Seating let you design your own sofa to compliment your own room. You determine the shape and size to follow the "around-the-room furniture" concept. Choose from a wide variety of colors and fabrics with contemporary (shown above), or traditional accents. Enjoy the luxury of custom styling at a reasonable price. "Conversation pit" grouping shown above: \$1,190.

Merkel

FURNITURE and CARPET

Main Street in Chelsea • Telephone 475-8621 • Open Monday and Friday Nights 'til 9
Professional Design Consulting

IT'S SPRING!
The Selection Is Great
in All Depts.
LADIES - MEN'S
BOYS' & GIRLS'
YARD GOODS - NOTIONS
FOOTWEAR
It's All New!

BE SURE TO SHOP
THE BARGAIN FLOOR
It's loaded . . . and the prices
are rock bottom.
Some far below our cost.

Use Your Master Charge
or Bank Americard

DANCER'S
Chelsea's Friendly Dept. Store



THURSDAY THROUGH TUESDAY SUPER BONUS BUYS

CHELSEA EXTRA SPECIALS in Addition to Those in Our Big 8-Page Circular Delivered to Your Homes By Mail.

★ FRESH BAKED GOODS DELIVERED DAILY

ALL BEEF SAVE 14c LB.

FRESH HAMBURGER lb. **59c**

U.S.D.A. BEEF BLADE CUT SAVE 30c LB.

CHUCK ROAST lb. **59c**

LEAN, TENDER, BREADED SAVE 20c LB.

PORK CUTLETS lb. **59c**

POLLY'S QUALITY

WHITE BREAD 20-Oz. Loave **59c** SAVE 23c

SEALTEST

2% MILK Gallon **79c** SAVE 20c

G & W SUGAR 5-Lb. Bag **39c** SAVE 26c

POLLY'S QUALITY SAVE 26c

ICE CREAM 1/2 Gallon **49c**

GALA SAVE 48c

PRINTED TOWELS Jumbo Rolls **\$1**

SAVE 35c

WYLER'S LEMONADE 12-Oz. Pkgs. **\$1**

FIRM

GOLDEN BANANAS lb. **13c**

VAN CAMP'S SAVE 6c

PORK & BEANS 21-Oz. Can **16c**

SAVE 20c

CRISCO SHORTENING 3 Lb. Can **69c**

KRAFT SAVE 16c

PARKAY MARGARINE 4 Lb. Pkgs. **\$1**

Junior High Track Team Rallies for Win

"They didn't give up, they just kept coming on," said coach Pat Clark of the Beach Junior High school track team.

The team had just pulled a come-from-behind victory in its triangular meet against Dundee and Saline Wednesday, April 12.

After the first five events it appeared as if the Chelsea squad would have been better off if they had not donned their track suits for the day. Losing by 20 points, they battled on to an eventual 70 point total which proved enough to top Dundee's 65½ and Saline's 17½.

The outcome of the meet was in doubt until the very last event when the 440-yd. relay team of John Collins, Mark Burnett, Mark Smith, and Gary Marriott placed first in a time of :56.2 to ice the victory.

The 880-yd. relay team of Mark Houle, Mark Heard, Brian Wissner, and Dennis Bauer also turned in a winning performance in the time of 1:53.4.

Dave Murphy was a standout performer for the Chelsea squad, setting a new school record of :8.66 in his first-place finish in the 75-yd. dash, as well as a winning time of :11.2 in the 100-yd. dash. Brian Wissner placed right behind Dave in the 75-yd. event with a time of :9.05 and another teammate, Mark Smith, finished second behind the speedster with a time of :12.2 in the 100-yd. dash.

Dennis Bauer, Fred Pearsall, and Gary Marriott turned in identical times of :7.65 for the top three spots as Chelsea swept the 60-yd. dash.

The 220 was won by Fred Pearsall in a time of :27.6 with Chelsea taking seconds in the next three events: Roger Howard in the 440 with a time of :50.4, Dave Frame in the 880 in 3:37.8, and Bill Shoemaker in the mile run with a time of 5:57.6.

Howard Salyer placed second in both hurdle events, running the 100-yd. lows in a time of :13 flat and the 400-yd. high hurdles in :24.

The Chelsea squad placed consistently in the field events though no firsts were taken. Mark Smith placed third in the shot put with a toss of 36'11", while his teammate, Randy Sweeney, placed second in the high jump with a 4'10" leap. Dennis Bauer finished second in the long jump with a 15'5" effort while the versatile Howard Salyer placed right behind him with a jump of 15'2 3/4".

After their meet Wednesday, April 19, against Pinckney and Stockbridge, the young trackmen will travel to South Lyon on April 26 and wrap up their schedule at home against Tecumseh on May 3, at 4 p.m.

IMPOSSIBLE DREAM?

A century-old dream of connecting Italy and Sicily may become reality within a decade. The Italian government is pushing a program to build the world's longest suspension bridge across the Strait of Messina. Expected to take five to eight years to complete, the bridge would be about 9,000 feet long. Plans call for suspending the bridge from four massive towers, each 100 to 650 feet taller than the 1,250-foot Empire State Building.

CHELSEA FINANCE CORP.

\$25 to \$1,500

For Any
Worthwhile Purpose

See or Call
FRANK HILL
at 475-8631

111 PARK STREET
CHELSEA, MICH.

See Us for Your

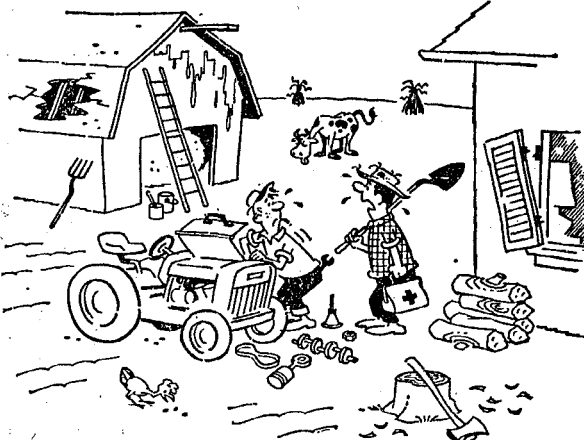
FARM CHEMICALS

- ★ Aatrex
- ★ Lasso
- ★ Dacthal
- ★ Estron 99
- ★ Formula 40
- ★ Lorox 50W
- ★ MCP Amine
- ★ Princap 80W
- ★ Sevin 50W
- ★ Sevin 80W

FARMERS' SUPPLY CO.

122 Jackson St.

LAFF OF THE WEEK



National Library Week Theme Is 'Right To Read' for All

By Mary Ann Paulin,
Media Specialist,
Beach Middle School

"The Right To Read" is not only the theme of the National Book Committee, but it is also the theme of ESEA Title II and the "Target for the 70's" of James E. Allen, Jr., former U.S. Commissioner of Education.

According to Commissioner Allen, "Any child who fails to acquire the ability to read has been denied a right—a right as fundamental as the right to life, liberty and the pursuit of happiness—the right to read... Therefore, as U.S. Commissioner of Education, I am herewith proclaiming my belief that we should immediately set for ourselves the goal of assuring that by the end of the 1970's the right to read shall be a reality for all."

Before explaining how this specifically affects the school libraries in Chelsea, ESEA Title II or Public Law 89-10 should be explained. The Elementary and Secondary Act of 1965 (ESEA Title II) "recognizes that, at all levels of education, teaching programs have become increasingly dependent upon effective school library materials and services, high quality, up-to-date textbooks, and a variety of other instructional resources."

Because most school libraries do not have as many materials as are needed to adequately support the school program and needs of students, Title II funds have been made available to public and private schools since 1965. However, it must be remembered, that these funds are supplementary only and are not intended to replace local budgets provided by local boards of education. In fact, one requirement for receiving these funds is that the library budget must be equal to or above the budget provided the preceding year.

Title II has adopted "The Right To Read" theme for 1971 and 1972 because "The Right To Read" implies that adequate reading materials will be supplied to students. In order for students to meet their interests and abilities when reading for class assignments or for pleasure, a large collection of reading materials from which to select is necessary.

Our society has become increasingly multi-media oriented and students are introduced to television before they are introduced to print. Because students learn better when several senses are involved in the learning process, the school libraries in Chelsea try to include slides, filmstrips, 16mm films, maps, globes, pamphlets, study prints, records, transparencies, and magazines in addition to the usual books.

Since the price of audio-visual materials is high, the supplementary funds supplied by ESEA Title II are welcomed by librarians. Most of the Title II funds in the Chelsea schools are used to purchase audio-visual materials. One

major exception is that some funds are used to purchase expensive reference books which, might otherwise not be purchased. This especially applies to the high school. Some of the materials purchased with Title II funds for the elementary schools, according to Lois Marshall, librarian, include study prints and filmstrips on geography, nature activities, the flag, the U.S. and Michigan Capitol buildings, and pollution. Title II purchases at Beach Middle School have included reference books but last year all purchases were for audio-visual materials. Filmstrips, records, and study prints on world geographical areas; the human senses; American history; micro-organisms; world history including Greece, Rome, and the middle ages; power and worldworking tools are examples of some of the areas covered. It should be noted that Title II expenditures are for materials only, not for accompanying equipment.

As you can see, the reading materials used by students are not limited to books. Thanks to Title II, ESEA, students in Chelsea can exercise their "Right To Read."

Large schools of fish will be pinpointed by satellites, aiding in the world-wide fight against hunger.

St. Louis School Notes

Friday afternoon, April 14, the boys of the St. Louis school went to the circus in Ann Arbor as guests of the Civitan Club. After an enjoyable day eating popcorn and peanuts at the circus, the boys returned to find guests from the Don Guanella school in Philadelphia waiting for them. This is the St. Louis school's sister school in the east. Nine boys accompanied by Fr. Joseph, Sister Florina, and Dennis McNamara, their athletic coach and his wife, made the trip to Chelsea.

Saturday the St. Louis Rooster's basketball team broke a five-year losing streak against the Don Guanella school by defeating the visiting team, 69-54. Fr. Umberto and Bob Wilkinson coached the winning team while the Rev. Warner Siebert of St. Paul United Church of Christ and Duke Weiss were the game referees. Fifteen local Chelsea girls acted as cheerleaders and stayed for the post-game dinner and dance.

A highlight of the morning occurred when Richard Wickenhaiser realized that he had forgotten his tennis shoes at home. A call was quickly placed to his father in Carleton who flew the family plane to the school and dropped the shoes from the window as he circled the field. They were quickly recovered in a small woods near the school by Fr. Umberto and the game proceeded as planned.

Sister Rosetta at the school had a visit this past week-end from her cousin, also a nun, who she had not seen in 32 years. Sister Domenica Iacovelli was visiting her home in New York and decided to fly in to visit her cousin and the school. She

is a missionary nurse serving in Turkey.

This week the school will be celebrating the birthdays of Patrick Deacon, Michael Randall, Kevin Reeside, and Paul Kidd.

Friday afternoon the boys will go home for the week-end to visit with their parents, returning on Sunday.



TROOP 476—

Members of Boy Scout Troop 476 held a cabin campout April 14-16 at Bruin Lake Camp. Those attending are Bob Heydauff, Ted Hepburn, Pete Stahl, Dennis Cosgrove, Don Hall, Mike Schanz, Lee Hafner, Jim Stahl, David Stahl, Dave Marsh, James Bollinger, M. Kern, Steve Worden, Steve Jaskot, Pat Smith, Mike Rowe, Dave Wetzel. Adults were William Hafner and Scoutmaster Larry Poertner. Activities included scavenger hunts, first aid baseball game, advancements and obstacle course. Don Oesterle, scribe.

The University of Michigan Extension Service offered 547 credit courses last year.

LaFONTEINE Construction & Development Corp.

GENERAL CONTRACTORS

Will Build To
Your Specifications

CUSTOM BUILDER - Residential, Commercial, Industrial
COMPLETE HOME MODERNIZATION SPECIALISTS

- ★ Additions
- ★ Family Rooms
- ★ Attics
- ★ Rec. Rooms
- ★ Roofing
- ★ Siding
- ★ Cement Work
- ★ Kitchens
- ★ Patios

FREE ESTIMATES
LICENSED BUILDERS

PHONE 475-2663
525 N. MAIN, CHELSEA

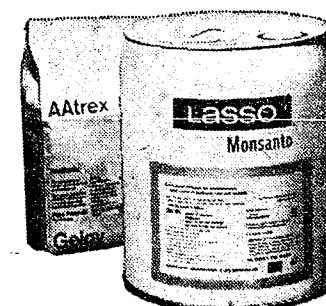
SMITH-DOUGLASS

Certainly Lasso® plus atrazine controls fall panicum.

Plenty of growers last season learned that the "foxtail" they thought grew through their herbicide was really fall panicum.

And plenty of growers this season will learn that if you tank mix Lasso plus atrazine, you won't find fall panicum. Nor will you find giant foxtail, crabgrass and most other grasses...or lots of broadleaves like smartweed, pigweed, cocklebur.

Lasso plus atrazine gets 'em all in corn.



That's what you expect from your herbicide.

WASHTENAW CROP SERVICE CENTER

885 PARKER RD.

PH. 428-8851

BOB KUSHMAUL - MAXINE KUSHMAUL
CARL KIDD - PAUL ROTHFUSS - DON DIUBLE

Helping You Make the Growing Greater
WITH GRO-POWER PACKAGE!